

State of Rhode Island and Providence Plantations

Fiscal Year 2019 Budget



Volume III – Education

Gina M. Raimondo, Governor

Agency Summary

RHODE ISLAND COUNCIL ON THE ARTS

Agency Mission

To ensure that the arts in all Rhode Island communities will continue to grow and play an increasing role in the welfare and educational experience of Rhode Islanders.

Agency Description

The Rhode Island State Council on the Arts (RISCA) was established in 1967. RISCA achieves its mission by distributing grants and offering technical assistance and support to artists, arts organizations, schools, community centers, social service organizations, and local governments. RISCA employs a variety of methods to carry out its work, including grant-making, strategic partnerships, and public outreach.

Funding within the agency's various grant categories allows the Council to address its primary function by awarding grants to artists and non-profit organizations to support arts programming in local communities, schools, and other settings. RISCA-supported cultural programs have a significant impact on the local and state economy, providing jobs for artists and the many businesses that depend on a vibrant arts community. RISCA grants also play an important role in providing a complete education for all Rhode Island children and youth, helping students develop creativity and problem-solving skills that will contribute to their success in life.

RISCA is involved in a series of strategic partnerships with major institutions and entities from the public and private sectors to broaden support for the arts in the State. A few current partners include: the National Endowment for the Arts, the New England Foundation for the Arts, the Rhode Island Foundation, the Rhode Island Alliance for Arts Education, the Rhode Island Teaching Artists Center (RITAC), VSA arts of Rhode Island, the Rhode Island Department of Elementary and Secondary Education, the Massachusetts Museum of Contemporary Art (MassMoCA), among others.

RISCA provides technical assistance and information services to many individuals and entities. These services include management assistance to individual artists and arts organizations, workshops, and general dissemination of information through a wide variety of media including the RISCA website and blog, the monthly newsletter, and RISCA's social media accounts. RISCA manages Rhode Island's Art for Public Facilities Program, which allows the Council to commission or acquire works of art for state buildings through the Allocation for Art for Public Facilities Act, which sets aside a portion of funds for the construction or renovation of state facilities for the acquisition of art. The Council coordinates the process for commissioning art in public facilities in compliance with the Act, providing opportunities for the general public to experience art as part of their interaction with state government.

RISCA houses the RI Film and Television Office. Motion pictures and television play a significant role in the cultural life of the State. Film and television have grown during the past several decades into an important art form, and both on a national and international level are a formidable economic engine. The combination of the Rhode Island Film and Television Office with the Rhode Island Council on the Arts reinforces state support for all art forms, enhances the attractiveness of the state to national and international productions, and facilitates economic progress.

Statutory History

R.I.G.L. 42-75 defines the role of the Council.

R.I.G.L. 42-75.2 describes the Allocation for Art for Public Facilities Act.

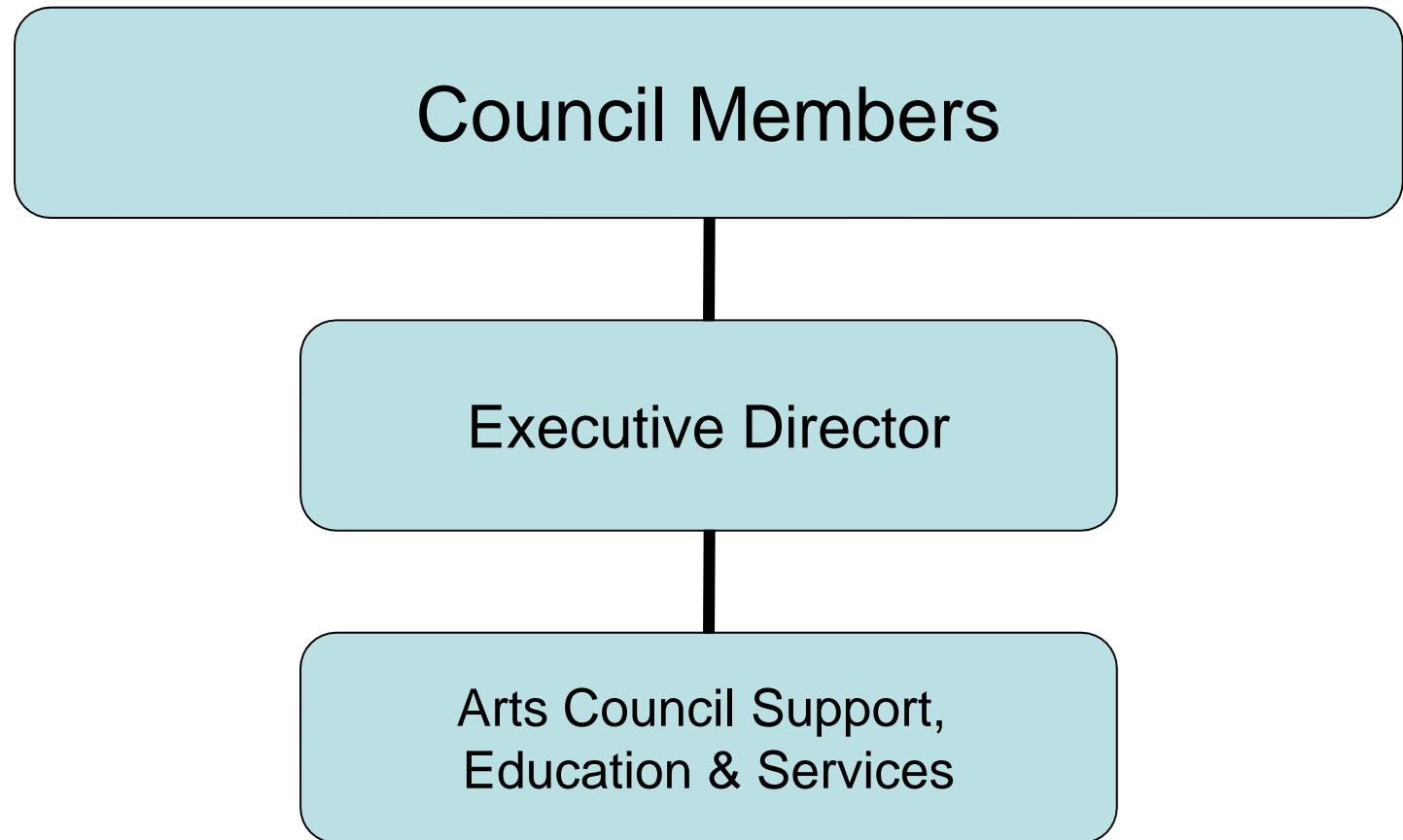
Budget

RHODE ISLAND COUNCIL ON THE ARTS

	2016 Actuals	2017 Actuals	2018 Enacted Budget	2018 Revised Budget	2019 Recommended
Expenditures by Program					
Central Management	2,995,774	2,905,499	3,072,310	3,126,037	3,113,746
Total Expenditures	2,995,774	2,905,499	3,072,310	3,126,037	3,113,746
Expenditures by Object					
Salary And Benefits	914,520	866,358	932,540	903,300	931,901
Contract Professional Services	34,707	40,841	45,200	49,200	45,200
Operating Supplies And Expenses	91,258	96,142	143,570	196,860	184,580
Assistance And Grants	1,524,864	1,636,002	1,645,000	1,616,477	1,591,865
Subtotal: Operating	2,565,349	2,639,343	2,766,310	2,765,837	2,753,546
Capital Purchases And Equipment	430,425	266,156	306,000	360,200	360,200
Subtotal: Other	430,425	266,156	306,000	360,200	360,200
Total Expenditures	2,995,774	2,905,499	3,072,310	3,126,037	3,113,746
Expenditures by Source of Funds					
General Revenue	1,844,116	1,906,356	1,945,056	1,963,360	1,989,693
Federal Funds	700,799	710,269	781,454	751,796	719,053
Restricted Receipts	0	19,119	0	10,881	5,000
Operating Transfers From Other Funds	450,859	269,756	345,800	400,000	400,000
Total Expenditures	2,995,774	2,905,499	3,072,310	3,126,037	3,113,746
FTE Authorization	8.6	8.6	8.6	8.6	8.6

The Agency

Rhode Island Council on the Arts



Performance Measures

RHODE ISLAND COUNCIL ON THE ARTS

Communities Served

The Rhode Island State Council on the Arts (RISCA) sets a high standard for serving every Rhode Island community. The figures below represent the percentage of Rhode Island's 39 cities and towns that have been served by RISCA through grants or direct services. [Note: Missing values appear as zeros in the measure.]

	<i>Reporting Period: State Fiscal Year</i>				
	2015	2016	2017	2018	2019
Target	98.00%	95.00%	95.00%	95.00%	95.00%
Actual	98.00%	98.00%	98.00%	0.00%	

Artists Supported

The figures below represent the number of artists who have been employed or engaged in programs supported by RISCA. This employment is either part-time or full-time and is an indicator of the role the arts play in the state's economy. [Note: Missing values appear as zeros in the measure.]

	<i>Reporting Period: State Fiscal Year</i>				
	2015	2016	2017	2018	2019
Target	38,500.00	29,000.00	35,000.00	35,000.00	25,000.00
Actual	38,500.00	37,500.00	57,033.00	0.00	

Program Participation

The figures below represent the number of individuals who have attended or taken part in arts programs supported by RISCA. [Note: Missing values appear as zeros in the measure.]

	<i>Reporting Period: State Fiscal Year</i>				
	2015	2016	2017	2018	2019
Target	4,200,500.00	2,700,000.00	3,800,000.00	3,800,000.00	2,700,000.00
Actual	4,200,500.00	4,000,000.00	6,257,000.00	0.00	

Personnel

Agency: RHODE ISLAND COUNCIL ON THE ARTS

Central Management

	FY 2018		FY 2019	
	FTE	Cost	FTE	Cost
Unclassified				
ADMINISTRATIVE ASSISTANT	1.0	47,494	1.0	47,494
ARTS IN EDUCATION DIRECTOR	1.0	61,295	1.0	52,824
EXECUTIVE DIRECTOR (ARTS COUNCIL)	1.0	107,655	1.0	107,655
EXECUTIVE DIRECTOR OFFICE OF FILM & TELEVISION	1.0	113,678	1.0	113,678
SENIOR ADMINISTRATIVE AIDE	1.0	57,858	1.0	57,858
SENIOR RESEARCH TECHNICIAN	3.0	148,272	3.0	142,648
SENIOR SYSTEMS DESIGN PROGRAMMER	0.6	26,302	0.6	26,302
Subtotal Unclassified	8.6	562,554	8.6	548,458
Subtotal	8.6	562,554	8.6	548,458
Turnover		(24,700)		0
Total Salaries		537,853		548,458
Benefits				
FICA		41,141		41,957
Health Benefits		125,174		130,008
Payroll Accrual		3,111		3,149
Retiree Health		32,163		32,799
Retirement		140,664		150,302
Subtotal		342,253		358,215
Total Salaries and Benefits	8.6	880,106	8.6	906,673
Cost Per FTE Position (Excluding Temp. and Seasonal)		102,338		105,427.09
Statewide Benefit Assessment		23,194		25,228
Payroll Costs	8.6	903,300	8.6	931,901
Purchased Services				
Information Technology		400		400
Management & Consultant Services		33,800		29,800
Training and Educational Services		15,000		15,000
Subtotal		49,200		45,200
Total Personnel	8.6	952,500	8.6	977,101
Distribution by Source of Funds				
General Revenue		705,551		732,283
Federal Funds		213,149		215,018
Restricted Receipts		4,000		0
Operating Transfers from Other Funds		29,800		29,800
Total All Funds		952,500		977,101