

State of Rhode Island and Providence Plantations

# Fiscal Year 2019 Budget



Volume II – Health and Human Services  
Gina M. Raimondo, Governor

---

## Agency Summary

---

### GOVERNOR'S COMMISSION ON DISABILITIES

---

#### Agency Mission

The Commission's mission is to ensure "that people with disabilities are afforded the opportunities to exercise all the rights and responsibilities accorded to citizens of this state" {RIGL 42-51-6(1)} The Commission's goals are:

- 1) The adoption of state government policies that will ensure every person with a disability:
  - a) Is able to work;
  - b) Is able to live on her / his own; with the right services, at the right time, and in the right place; and
  - c) Is involved in her / his neighborhood and community.
- 2) That every person with a disability is able to exercise all the rights and responsibilities accorded to citizens of this state.
- 3) That every working age person with disability has the opportunity to work with supports and / or accommodations if needed.
- 4) That entrepreneurship opportunities and supports are available for working age persons with disabilities.

The Commission's vision for Rhode Island is that every Rhode Islander with a disability is able to accomplish their maximum potential in independence, human development, productivity and economic self-sufficiency.

#### Agency Description

The Commission consists of 18 volunteer Commissioners appointed by the Governor and numerous volunteers who serve on committees.

The Accessibility Committee develops the state's 504 / ADA Transition Plan, for removing access (physical and communication) barriers in state owned buildings, schools, colleges, beaches, and parks. The Committee also oversees the ADA accessibility training and services. The Committee monitors accessibility to state and local government services, including elections.

The Disability Business Enterprises Committee certifies small businesses owned by person(s) with a disabilities to receive preferential points when bidding on state contracts for goods and services.

The Employment Committee oversees the ADA employment training and services. The Committee promotes work as well as work incentives. The Committee also plans an annual employment conference, in October (National Disability Employment Awareness Month).

The Legislation Committee conducts forums to find out the concerns (fears) of people with disabilities and their families, during the last full week in July.

The Public Awareness Committee develops and oversees a broad public awareness campaign aimed at the adoption of state government policies that will ensure people with disabilities are afforded opportunities to exercise all of the rights and responsibilities accorded to citizens of this state.

The State Coordinating Committee on Disability Rights steers the State Government's carrying out of disability rights laws.

The Hearing Board's five members decide if discrimination was caused by access barriers {RI Gen. Laws 42-87}. If so, the Board can order corrective action and award damages.

#### Statutory History

The Commission's responsibilities are defined in RI General Laws: 42-51; 42-87; 37-8-15 & 15.1; 42-46-5 (b); 42-46-13(f); 37-2.2; 30-15-6; 28-5.1-9; 31-28-7.3; 42-102-2(e) and 17-9.1-31, Article I § 2, RI Constitution and federal laws: Section 504 of the Rehabilitation Act, Nondiscrimination on the Basis of Disability (29 USC 794); the Americans with Disabilities Act (42 USC 12101 et. seq.); and Section 261 of the Help America Vote Act, Election Assistance to Individuals with Disabilities (42 USC 15461).

# Budget

## GOVERNOR'S COMMISSION ON DISABILITIES

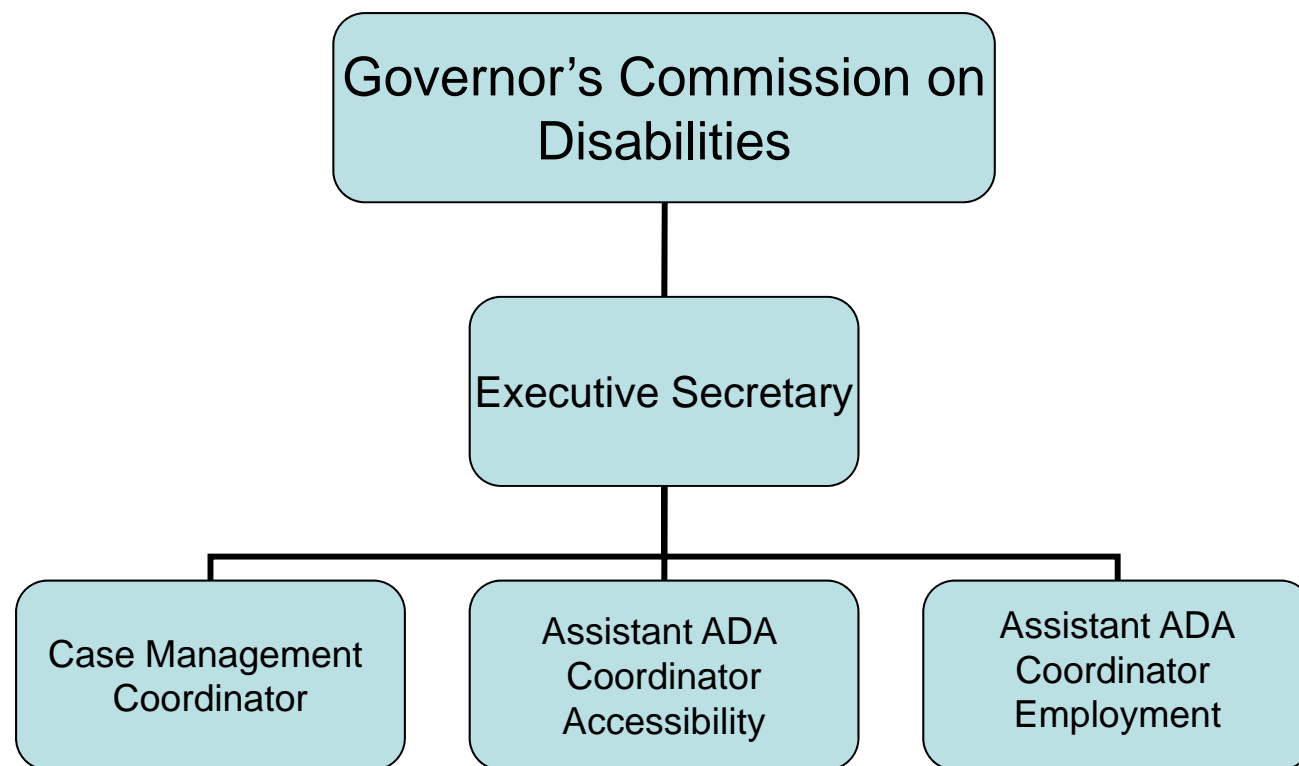
	2016 Actuals	2017 Actuals	2018 Enacted Budget	2018 Revised Budget	2019 Recommended
<b>Expenditures by Program</b>					
Central Management	429,998	669,120	842,190	867,672	877,295
<b>Total Expenditures</b>	<b>429,998</b>	<b>669,120</b>	<b>842,190</b>	<b>867,672</b>	<b>877,295</b>
<b>Expenditures by Object</b>					
Salary And Benefits	374,493	398,410	406,794	409,249	419,110
Contract Professional Services	4,321	25,923	54,864	42,728	46,033
Operating Supplies And Expenses	36,466	19,769	41,318	62,295	57,652
Assistance And Grants	14,718	225,018	339,214	353,400	354,500
<b>Subtotal: Operating</b>	<b>429,998</b>	<b>669,120</b>	<b>842,190</b>	<b>867,672</b>	<b>877,295</b>
<b>Total Expenditures</b>	<b>429,998</b>	<b>669,120</b>	<b>842,190</b>	<b>867,672</b>	<b>877,295</b>
<b>Expenditures by Source of Funds</b>					
General Revenue	380,615	418,544	454,938	478,907	492,557
Federal Funds	29,456	211,435	343,542	335,167	335,167
Restricted Receipts	19,927	39,140	43,710	53,598	49,571
<b>Total Expenditures</b>	<b>429,998</b>	<b>669,120</b>	<b>842,190</b>	<b>867,672</b>	<b>877,295</b>
<b>FTE Authorization</b>	<b>4.0</b>	<b>4.0</b>	<b>4.0</b>	<b>4.0</b>	<b>4.0</b>

# The Agency

---

## Governor's Commission on Disabilities

---



## Performance Measures

### GOVERNOR'S COMMISSION ON DISABILITIES

#### Barrier-Free Voting

The Commission seeks to ensure voters with disabilities are able to cast votes independently, in secret, and at the same polling location as their neighbors. The figures below represent the percentage of polling places barrier-free on Election Day. Measure includes data from "special elections" that take place in RI.

<i>Frequency: Annual</i>	<i>Reporting Period: State Fiscal Year</i>				
	2015	2016	2017	2018	2019
<b>Target</b>	81.10%	100.00%	100.00%	100.00%	100.00%
<b>Actual</b>	81.10%	74.10%	75.90%	0.00%	

#### Adopting Policies that Benefit Persons with Disabilities

The Commission's goal is to ensure that people with disabilities have the opportunity to exercise all rights and responsibilities accorded to RI citizens and are able to reach their maximum potential. The figures below represent the percentage of successful outcomes for GCD's advocacy for disability-friendly policy adopted by the General Assembly (laws and budget articles), Executive Branch and General Officers (regulations), and Judiciary and quasi-judicial entities (decisions). [Notes: Legislation that was recommended as "beneficial if amended", that were neither amended nor enacted, has been re-categorized as "not a successful outcome". Missing values appear as zeros in the measure.]

<i>Frequency: Annual</i>	<i>Reporting Period: State Fiscal Year</i>				
	2015	2016	2017	2018	2019
<b>Target</b>	35.80%	75.00%	75.00%	75.00%	75.00%
<b>Actual</b>	35.80%	48.70%	37.80%	0.00%	

#### Promoting and Protecting the Rights of People with Disabilities

The Commission works to foster voluntary compliance with federal and state disability rights laws and regulations. The figures below represent the percentage of accessibility complaints resolved prior to hearing. [Note: Missing values appear as zeros in the measure.]

<i>Frequency: Quarterly</i>	<i>Reporting Period: State Fiscal Year</i>				
	2015	2016	2017	2018	2019
<b>Target</b>	91.10%	70.00%	70.00%	70.00%	70.00%
<b>Actual</b>	91.10%	82.80%	91.00%	0.00%	

#### Promoting Employment of Working Age People with Disabilities

Only 14% of Rhode Islanders with a Disability are college graduates vs. 35% of Rhode Islanders with No Disability. Only 36% of Rhode Islanders with a Disability are Employed vs. 78% of Rhode Islanders with No Disability. The Median Earned Income of Employed RI Workers with a Disability is more than \$10,965 less than Employed RI Workers with No Disability. Only 64% of Rhode Islanders with a Disability have an income at or above 150% of the poverty level (FPL) compared to 81% Rhode Islanders with No Disability. [Note: Missing values appear as zeros in the measure.]

<i>Frequency: Quarterly</i>	<i>Reporting Period: State Fiscal Year</i>				
	2015	2016	2017	2018	2019
<b>Target</b>	100.00%	50.00%	50.00%	50.00%	50.00%
<b>Actual</b>	100.00%	100.00%	100.00%	0.00%	

# Personnel

## Agency: GOVERNOR'S COMMISSION ON DISABILITIES

### Central Management

	FY 2018		FY 2019	
	FTE	Cost	FTE	Cost
<b>Classified</b>				
EXECUTIVE SECRETARY GOVERNOR'S COMM ON THE HANDICAPPED	1.0	72,473	1.0	86,968
<b>Subtotal Classified</b>	<b>1.0</b>	<b>72,473</b>	<b>1.0</b>	<b>86,968</b>
<b>Unclassified</b>				
ASSISTANT ADA COORDINATOR	2.0	114,419	2.0	120,433
CASE MANAGEMENT COORDINATOR	0.0	0	1.0	45,802
POLICY AIDE	1.0	44,888	0.0	0
<b>Subtotal Unclassified</b>	<b>3.0</b>	<b>159,307</b>	<b>3.0</b>	<b>166,235</b>
<b>Subtotal</b>	<b>4.0</b>	<b>231,780</b>	<b>4.0</b>	<b>253,203</b>
<b>Total Salaries</b>		<b>252,288</b>		<b>253,203</b>
<b>Benefits</b>				
FICA		19,299		19,369
Health Benefits		44,254		50,094
Payroll Accrual		1,448		1,454
Retiree Health		15,084		15,142
Retirement		66,280		68,202
<b>Subtotal</b>		<b>146,365</b>		<b>154,261</b>
<b>Total Salaries and Benefits</b>	<b>4.0</b>	<b>398,653</b>	<b>4.0</b>	<b>407,464</b>
<b>Cost Per FTE Position (Excluding Temp. and Seasonal)</b>		<b>99,663</b>		<b>101,866</b>
Statewide Benefit Assessment		10,596		11,646
<b>Payroll Costs</b>	<b>4.0</b>	<b>409,249</b>	<b>4.0</b>	<b>419,110</b>
<b>Purchased Services</b>				
Clerical and Temporary Services		26,907		27,651
Management & Consultant Services		410		420
Medical Services		366		380
Other Contracts		15,045		17,582
<b>Subtotal</b>		<b>42,728</b>		<b>46,033</b>
<b>Total Personnel</b>	<b>4.0</b>	<b>451,977</b>	<b>4.0</b>	<b>465,143</b>
<b>Distribution by Source of Funds</b>				
General Revenue		415,642		429,738
Restricted Receipts		36,335		35,405
<b>Total All Funds</b>		<b>451,977</b>		<b>465,143</b>