



**Gina M. Raimondo,
Governor**

**State of Rhode Island and
Providence Plantations
Fiscal Year 2018
Budget**

Volume III - Education

Agency

Historical Preservation And Heritage Commission

Agency Mission

Identify and protect historic and prehistoric sites, buildings, and districts throughout the State of Rhode Island and commemorate the history and culture of the State; promote and preserve the State's ethnic and cultural traditions; and provide a better understanding of the various ethnic cultures, which comprise the State's population.

Agency Description

The Rhode Island Historical Preservation and Heritage Commission is the state office for historic preservation and for sponsorship of state heritage activities. It is Rhode Island's only statewide preservation program to identify and protect historic buildings, districts, and archeological sites. The commission is responsible for developing a state historical preservation plan, and for survey and planning activities which provide for in-depth studies of each city and town to identify, evaluate, and record sites, structures, districts, and objects of historical, architectural, cultural, or archeological significance to the State.

The Commission sponsors and/or coordinates heritage festivals, heritage seminars, conferences, and symposia, and publishes scholarly and popular works relating to the social, political, and cultural development of the State. It also coordinates programs with other private or public groups or agencies which will meet the cultural needs of Rhode Island's citizens.

The Commission develops and implements programs for the preservation of historic resources. Federal and state projects are reviewed by the Commission to assess their effect on specific cultural resources. The Commission administers programs of financial assistance, which include grants, loans, and tax credits for restoration projects. A wide range of information and technical assistance is provided to citizens who own historic properties or are interested in preserving the heritage of their neighborhood and community. The Commission certifies municipal historic district zoning programs, which meet minimum standards, and annually administers funds to these "certified local governments."

Statutory History

Title 42, Chapter 45 of the Rhode Island General Laws established the Rhode Island Historical Preservation Commission and defined the duties of the Executive Director and commission members. Executive Order Number 10, issued July 1, 1977, initially created the Heritage Commission. In 1981, the General Assembly enacted Title 42, Chapter 79 of the Rhode Island General Laws establishing the commission as a permanent state agency. In the 1994 legislative session the General Assembly repealed Title 42, Chapter 79 and amended Title 42, Chapter 45 to add Heritage Commission responsibilities creating the Rhode Island Historical Preservation and Heritage Commission.

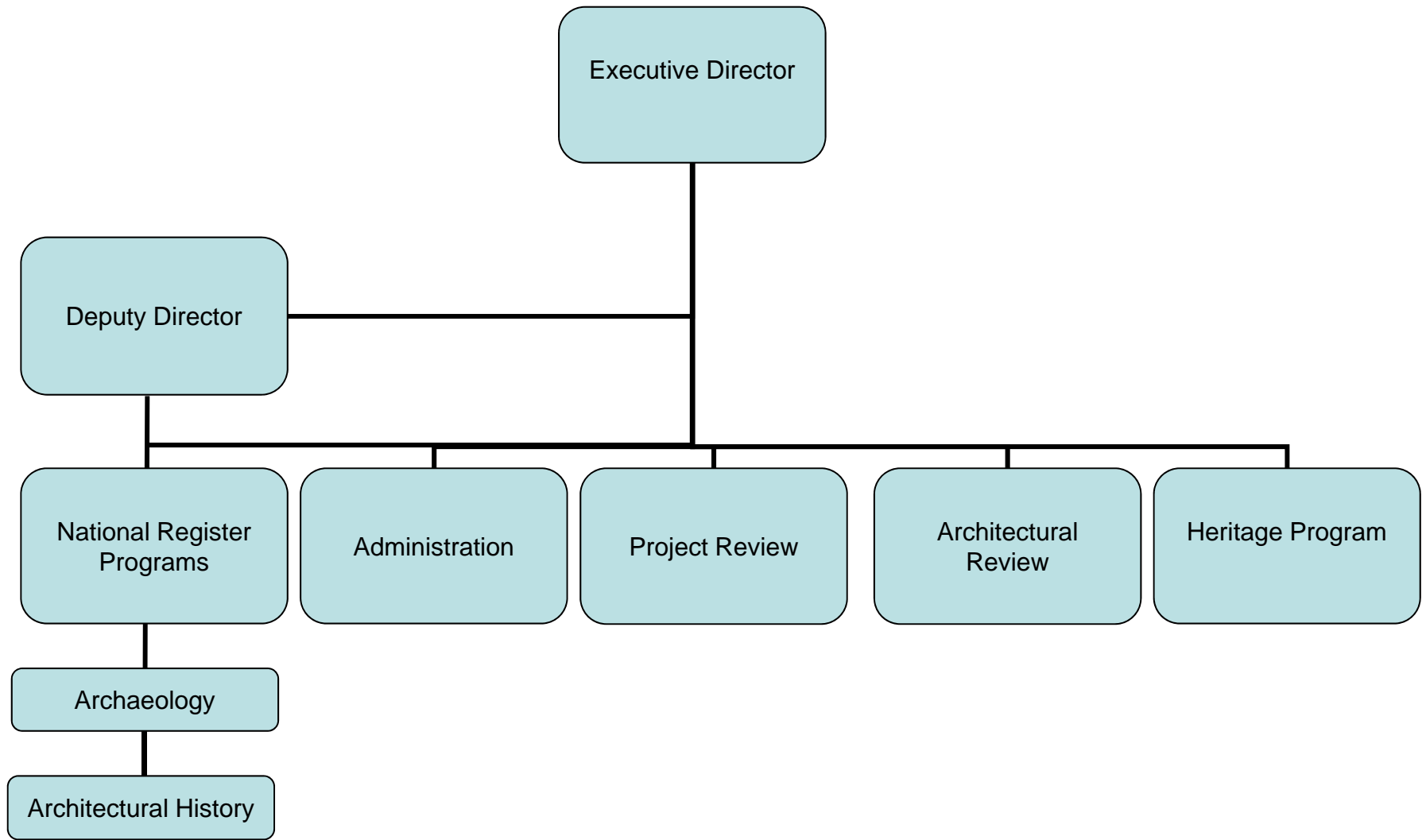
Budget

Historical Preservation And Heritage Commission

	FY 2015 Audited	FY 2016 Audited	FY 2017 Enacted	FY 2017 Revised	FY 2018 Recommend
Expenditures By Program					
Central Management	5,446,730	2,972,449	2,803,698	3,218,083	2,538,339
Total Expenditures	\$5,446,730	\$2,972,449	\$2,803,698	\$3,218,083	\$2,538,339
Expenditures By Object					
Personnel	1,521,827	1,665,891	1,679,803	1,675,116	1,691,780
Operating Supplies and Expenses	21,354	90,111	116,780	71,304	61,166
Assistance and Grants	1,838,861	1,090,752	1,002,745	1,470,663	784,393
Subtotal: Operating Expenditures	3,382,042	2,846,754	2,799,328	3,217,083	2,537,339
Capital Purchases and Equipment	2,064,688	125,695	4,370	1,000	1,000
Total Expenditures	\$5,446,730	\$2,972,449	\$2,803,698	\$3,218,083	\$2,538,339
Expenditures By Funds					
General Revenue	1,138,182	1,362,860	1,202,559	1,162,001	1,168,706
Federal Funds	1,855,585	1,283,096	1,093,966	1,547,028	860,963
Restricted Receipts	377,082	126,202	427,175	429,200	427,700
Operating Transfers from Other Funds	2,004,145	125,000	-	-	-
Other Funds	71,736	75,291	79,998	79,854	80,970
Total Expenditures	\$5,446,730	\$2,972,449	\$2,803,698	\$3,218,083	\$2,538,339
FTE Authorization	16.6	16.6	16.6	15.6	15.6

The Agency

Historical Preservation and Heritage Commission



Personnel

Historical Preservation And Heritage Commission Central Management

	Grade	FY 2017		FY 2018	
		FTE	Cost	FTE	Cost
Classified					
PRINCIPAL HISTORIC PRESERVATION SPECIALIST	00128A	2.0	144,134	2.0	144,134
PRINCIPAL HISTORIC PRESERVATION SPECIALIST	00128A	1.0	71,292	1.0	71,292
SUPERVISING HISTORIC PRESERVATION	00131A	1.0	68,723	1.0	72,080
PRINCIPAL HISTORIC PRESERVATION SPECIALIST	00128A	2.0	126,560	2.0	130,186
SENIOR HISTORIC PRESERVATION SPECIALIST	00125A	1.0	63,145	1.0	63,145
PRINCIPAL HISTORIC PRESERVATION SPECIALIST	00128A	1.0	61,993	1.0	61,993
SENIOR HISTORIC PRESERVATION SPECIALIST	00125A	1.0	54,909	1.0	54,909
SENIOR HISTORIC PRESERVATION SPECIALIST	00125A	1.0	54,015	1.0	54,909
SENIOR HISTORIC PRESERVATION SPECIALIST	00025A	2.0	99,426	2.0	102,610
HERITAGE COMMISSION AIDE	00118A	1.0	48,600	1.0	48,600
FISCAL CLERK	00114A	1.0	45,370	1.0	45,370
SENIOR WORD PROCESSING TYPIST	00012A	0.6	22,196	0.6	22,196
HISTORIC PRESERVATION SPECIALIST	00121A ¹	-	51,828	-	-
Subtotal		14.6	\$912,191	14.6	\$871,424
Unclassified					
EXECUTIVE DIRECTOR (RI HISTORIC PRES &	00837A	1.0	113,928	1.0	113,928
Subtotal		1.0	\$113,928	1.0	\$113,928
Temporary and Seasonal		-	9,279	-	-
Turnover		-	(45,032)	-	-
Subtotal		-	(\$35,753)	-	-
Total Salaries		15.6	\$990,366	15.6	\$985,352
Benefits					
Payroll Accrual			5,680		5,688
FICA			75,763		75,381
Retiree Health			58,573		58,923
Health Benefits			241,111		267,233
Retirement			258,164		255,870
Subtotal			\$639,291		\$663,095
Total Salaries and Benefits		15.6	\$1,629,657	15.6	\$1,648,447
Cost Per FTE Position (Excluding Temporary and Seasonal)			\$103,870		\$105,670
Statewide Benefit Assessment			\$45,459		\$43,333
Payroll Costs		15.6	\$1,675,116	15.6	\$1,691,780

Personnel

Historical Preservation And Heritage Commission Central Management

	Grade	FY 2017		FY 2018	
		FTE	Cost	FTE	Cost
Total Personnel		15.6	\$1,675,116	15.6	\$1,691,780
Distribution By Source Of Funds					
General Revenue		9.2	\$1,044,872	9.2	\$1,061,715
Federal Funds		5.4	\$523,065	5.4	\$523,270
Restricted Receipts		-	\$27,700	-	\$26,200
Other Funds		1.0	\$79,479	1.0	\$80,595
Total All Funds		15.6	\$1,675,116	15.6	\$1,691,780

1 The 1.0 FTE position associated with the Eisenhower House will be transferred to D.E.M mid-year, FY 2017.