



**Gina M. Raimondo,  
Governor**

**State of Rhode Island and  
Providence Plantations  
Fiscal Year 2018  
Budget**

**Volume III - Education**

# Agency

---

## Rhode Island Council On The Arts

---

### Agency Mission

To ensure that the role of the arts in the life of Rhode Island communities will continue to grow and play an increasing role in the welfare and educational experience of Rhode Islanders.

### Agency Description

The Rhode Island State Council on the Arts (RISCA) was established in 1967. It provides grants, technical assistance and support to artists, arts organizations, schools, community centers, social service organizations, and local governments to bring the arts into the lives of Rhode Islanders. RISCA employs a variety of methods to carry out its work, including grant-making, strategic partnerships, outreach and facilitation.

Funding within the agency's various grant categories allows the Council to address its primary function by awarding grants to artists and non-profit organizations to support arts programming in local communities, schools and other settings. RISCA-supported cultural programs have a significant impact on the local and state economy, providing jobs for artists and the many businesses that depend on a vibrant arts community. RISCA grants also play an important role in providing a complete education for all Rhode Island children and youth, helping students develop creativity and problem-solving skills that will contribute to their success in life.

RISCA is involved in a series of strategic partnerships with major institutions and entities from the public and private sectors to broaden support for the arts in Rhode Island. A few current partners include: the National Endowment for the Arts, the New England Foundation for the Arts, the Rhode Island Foundation, the Rhode Island Alliance for Arts Education, the Rhode Island Teaching Artists Center (RITAC), VSA arts of Rhode Island, the Rhode Island Department of Elementary and Secondary Education, the Massachusetts Museum of Contemporary Art (MassMoCA), among others.

RISCA provides technical assistance and information services to a large number of individuals and entities. These services include management assistance to individual artists and arts organizations, workshops, and general dissemination of information through a wide variety of media including the RISCA website and blog, the monthly newsletter, and RISCA's social media accounts.

RISCA manages Rhode Island's Art for Public Facilities Program, which allows the Council to commission or acquire works of art for state buildings through the Allocation for Art for Public Facilities Act, which sets aside a portion of funds for the construction or renovation of state facilities for the acquisition of art. The Council coordinates the process for commissioning art in public facilities in compliance with the Act, providing opportunities for the general public to experience art as part of their interaction with state government.

RISCA houses the RI Film and Television Office. Motion pictures and television play a significant role in the cultural life of the state. Film and television have grown during the past several decades into an important art form, and both on a national and international level are a formidable economic engine. The combination of the Rhode Island Film and Television Office with the Rhode Island Council on the Arts reinforces state support for these art forms, enhances the attractiveness of the state to national and international productions, and facilitates economic progress.

### Statutory History

R.I.G.L. 42-75 defines the role of the Council.

R.I.G.L. 42-75.2 describes the Allocation for Art for Public Facilities Act.

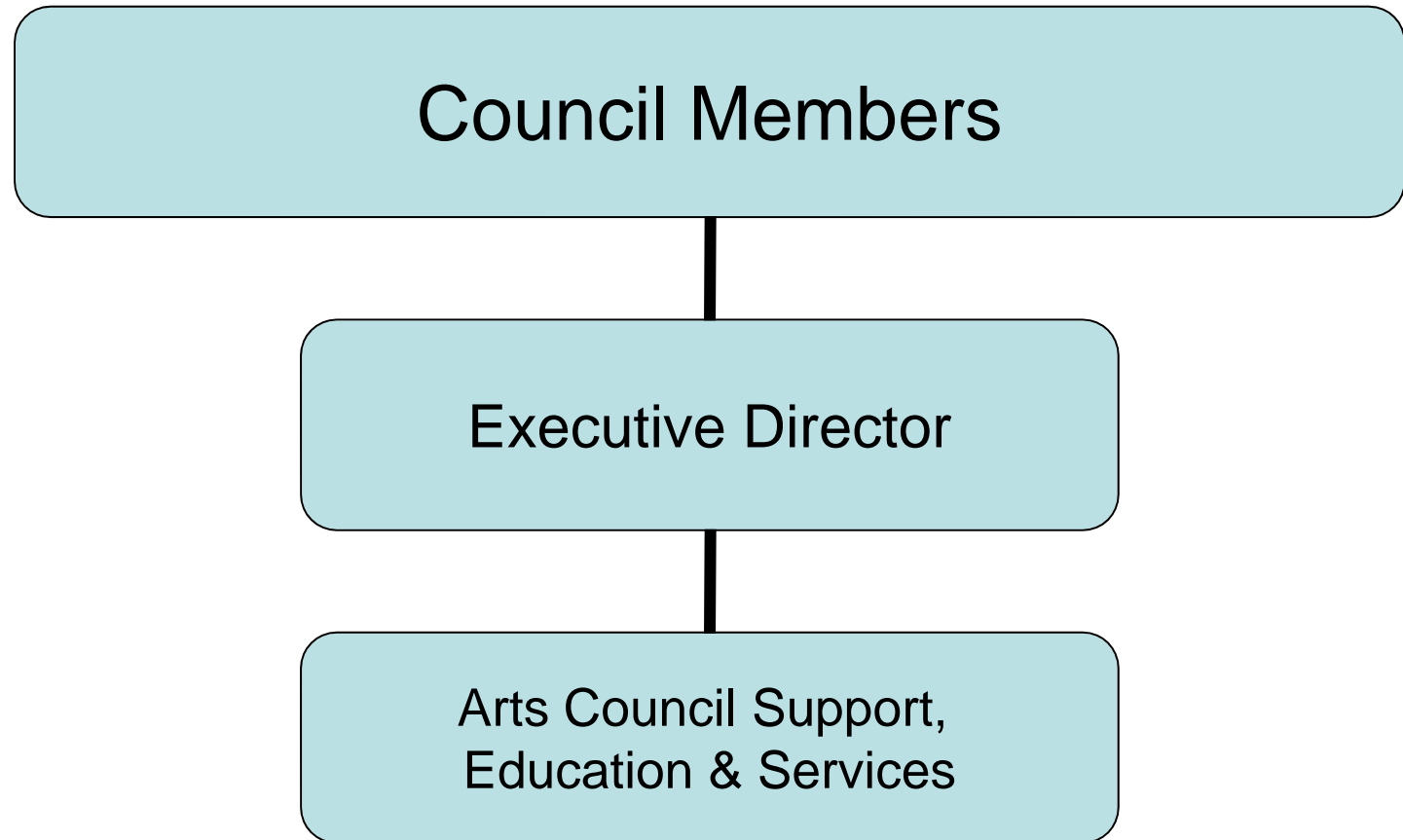
# Budget

## Rhode Island Council On The Arts

	FY 2015 Audited	FY 2016 Audited	FY 2017 Enacted	FY 2017 Revised	FY 2018 Recommend
<b>Expenditures By Program</b>					
Central Management	1,332,667	1,926,388	1,865,538	2,566,796	1,907,310
Grants Programs	1,054,574	1,069,386	1,165,000	1,165,000	1,165,000
<b>Total Expenditures</b>	<b>\$2,387,241</b>	<b>\$2,995,774</b>	<b>\$3,030,538</b>	<b>\$3,731,796</b>	<b>\$3,072,310</b>
<b>Expenditures By Object</b>					
Personnel	635,254	949,227	979,411	950,714	977,740
Operating Supplies and Expenses	55,507	91,258	130,727	158,182	143,570
Assistance and Grants	1,534,605	1,524,864	1,657,000	1,682,000	1,645,000
<b>Subtotal: Operating Expenditures</b>	<b>2,225,366</b>	<b>2,565,349</b>	<b>2,767,138</b>	<b>2,790,896</b>	<b>2,766,310</b>
Capital Purchases and Equipment	161,875	430,425	263,400	940,900	306,000
<b>Total Expenditures</b>	<b>\$2,387,241</b>	<b>\$2,995,774</b>	<b>\$3,030,538</b>	<b>\$3,731,796</b>	<b>\$3,072,310</b>
<b>Expenditures By Funds</b>					
General Revenue	1,490,966	1,844,116	1,951,884	1,939,368	1,945,056
Federal Funds	713,200	700,799	775,454	786,728	781,454
Restricted Receipts	-	-	-	25,000	-
Operating Transfers from Other Funds	183,075	450,859	303,200	980,700	345,800
<b>Total Expenditures</b>	<b>\$2,387,241</b>	<b>\$2,995,774</b>	<b>\$3,030,538</b>	<b>\$3,731,796</b>	<b>\$3,072,310</b>
<b>FTE Authorization</b>	<b>6.0</b>	<b>8.6</b>	<b>8.6</b>	<b>8.6</b>	<b>8.6</b>

# The Agency

Rhode Island Council on the Arts



# Personnel

## Rhode Island Council On The Arts Central Management

	Grade	FY 2017		FY 2018	
		FTE	Cost	FTE	Cost
<b>Unclassified</b>					
EXECUTIVE DIRECTOR OFFICE OF FILM &	00839A	1.0	108,265	1.0	108,265
EXECUTIVE DIRECTOR (ARTS COUNCIL)	00833A	1.0	93,613	1.0	93,613
SENIOR SYSTEMS DESIGN PROGRAMMER	00328A	0.6	41,749	0.6	41,749
ARTS IN EDUCATION DIRECTOR	00383F	1.0	63,231	1.0	63,231
SENIOR ADMINISTRATIVE AIDE	00321A	1.0	58,442	1.0	58,442
SENIOR RESEARCH TECHNICIAN	00321A	3.0	143,399	3.0	145,981
ADMINISTRATIVE ASSISTANT	00316A	1.0	45,232	1.0	45,232
<b>Subtotal</b>		<b>8.6</b>	<b>\$553,931</b>	<b>8.6</b>	<b>\$556,513</b>
Turnover		-	(11,405)	-	-
<b>Subtotal</b>		-	<b>(\$11,405)</b>	-	-
<b>Total Salaries</b>		<b>8.6</b>	<b>\$542,526</b>	<b>8.6</b>	<b>\$556,513</b>
<b>Benefits</b>					
Payroll Accrual			3,144		3,216
FICA			41,499		42,569
Retiree Health			32,388		33,279
Health Benefits			117,535		127,470
Retirement			143,724		145,516
<b>Subtotal</b>			<b>\$338,290</b>		<b>\$352,050</b>
<b>Total Salaries and Benefits</b>		<b>8.6</b>	<b>\$880,816</b>	<b>8.6</b>	<b>\$908,563</b>
<b>Cost Per FTE Position (Excluding Temporary and Seasonal)</b>			<b>\$102,420</b>		<b>\$105,647</b>
<b>Statewide Benefit Assessment</b>			<b>\$24,660</b>		<b>\$23,977</b>
<b>Payroll Costs</b>		<b>8.6</b>	<b>\$905,476</b>	<b>8.6</b>	<b>\$932,540</b>
<b>Purchased Services</b>					
Information Technology			438		400
Management & Consultant Services			29,800		29,800
Training and Educational Services			15,000		15,000
<b>Subtotal</b>			<b>\$45,238</b>		<b>\$45,200</b>
<b>Total Personnel</b>		<b>8.6</b>	<b>\$950,714</b>	<b>8.6</b>	<b>\$977,740</b>
<b>Distribution By Source Of Funds</b>					
General Revenue		6.6	\$708,286	6.6	\$733,656
Federal Funds		2.0	\$212,628	2.0	\$214,284
Operating Transfers from Other Funds		-	\$29,800	-	\$29,800
<b>Total All Funds</b>		<b>8.6</b>	<b>\$950,714</b>	<b>8.6</b>	<b>\$977,740</b>

# Performance Measures

## Rhode Island Council On The Arts

### *Communities Served*

The Rhode Island State Council on the Arts (RISCA) sets a high standard for serving every Rhode Island community. The figures below represent the percentage of Rhode Island's 39 cities and towns that have been served by RISCA through grants or direct services.

	2014	2015	2016	2017	2018
<b>Target</b>	95%	95%	95%	95%	95%
<b>Actual</b>	100%	98%	98%	--	--

Performance for this measure is reported by state fiscal year.

### *Artists Supported*

The figures below represent the number of artists who have been employed or engaged in programs supported by RISCA. This employment is either part-time or full-time and is an indicator of the role the arts play in the state's economy.

	2014	2015	2016	2017	2018
<b>Target</b>	28,000	28,000	29,000	35,000	35,000
<b>Actual</b>	34,548	38,500	37,500	--	--

Performance for this measure is reported by state fiscal year.

### *Program Participation*

The figures below represent the number of individuals who have attended or taken part in arts programs supported by RISCA.

	2014	2015	2016	2017	2018
<b>Target</b>	2,500,000	2,600,000	2,700,000	3,800,000	3,800,000
<b>Actual</b>	3,958,373	4,200,500	4,000,000	--	--

Performance for this measure is reported by state fiscal year.