



**Gina M. Raimondo,
Governor**

**State of Rhode Island and
Providence Plantations
Fiscal Year 2018
Budget**

**Volume II – Health and Human
Services**

Agency

Governor's Commission On Disabilities

Agency Mission

The Commission's objective is to ensure that all people with disabilities are afforded the opportunities to exercise all the rights and responsibilities accorded to citizens of this State and each person with a disability is able to reach his/her maximum potential in independence, human development, productivity and self-sufficiency.

Agency Description

The Commission consists of 18 Commissioners appointed by the Governor; a staff of four; several college fellows; and many volunteers.

The Commission is responsible for protecting the rights of individuals with disabilities including coordinating the state compliance with federal and state disability rights laws; providing technical assistance to public and private agencies, businesses, and citizens in complying with those laws; prioritization of Americans with Disabilities Act (ADA) accessibility renovation projects to overcome physical and communication barriers in state owned facilities; making polling places accessible to individuals with the full range of disabilities; training election officials, poll workers, and election volunteers to promote the access and participation of individuals with the full range of disabilities in elections for federal office; providing individuals with the full range of disabilities with information about their rights; and investigating disability discrimination complaints involving physical barriers at public or private facilities and ordering corrective action.

The Commission also advocates for the adoption of public policies so that each person with a disability is able to reach her/his maximum potential in independence, human development, productivity and self-sufficiency.

The Commission's Disability Business Enterprise program assists small disadvantaged businesses owned by persons with disabilities to win state funded and state directed public construction contracts and state contracts for goods and services.

Statutory History

The Commission's responsibilities are defined in RI General Laws: 42-51; 42-87; 37-8-15 & 15.1; 42-46-5(b); 42-46-13(f); 23-6-22; 37-2.2; 30-15-6; 28-5.1-9; 31-28-7.3; 42-102-2(e) and 17-9.1-31, Article I § 2, RI Constitution and federal laws: Section 504 of the Rehabilitation Act, Nondiscrimination on the Basis of Disability (29 USC 794); the Americans with Disabilities Act (42 USC 12101 et. seq.); and Section 261 of the Help America Vote Act, Election Assistance to Individuals with Disabilities (42 USC 15461).

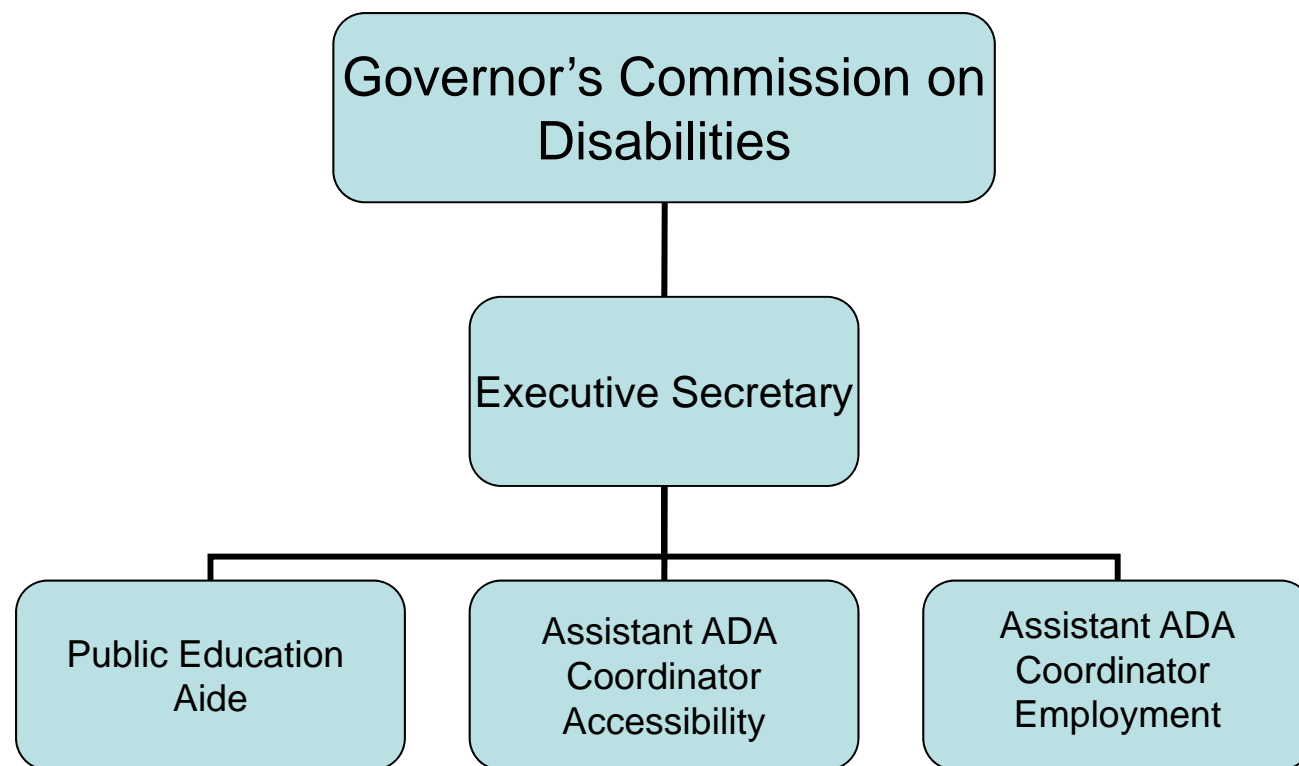
Budget

Governor's Commission On Disabilities

	FY 2015 Audited	FY 2016 Audited	FY 2017 Enacted	FY 2017 Revised	FY 2018 Recommend
Expenditures By Program					
Central Management	1,215,102	429,998	685,423	778,020	842,190
Total Expenditures	\$1,215,102	\$429,998	\$685,423	\$778,020	\$842,190
Expenditures By Object					
Personnel	373,032	378,814	383,190	440,836	461,658
Operating Supplies and Expenses	40,854	36,466	25,119	33,970	41,318
Assistance and Grants	211,489	14,718	277,114	303,214	339,214
Subtotal: Operating Expenditures	625,375	429,998	685,423	778,020	842,190
Capital Purchases and Equipment	442,638	-	-	-	-
Operating Transfers	147,089	-	-	-	-
Total Expenditures	\$1,215,102	\$429,998	\$685,423	\$778,020	\$842,190
Expenditures By Funds					
General Revenue	355,439	380,615	412,547	420,596	454,938
Federal Funds	263,931	29,456	228,750	298,064	343,542
Restricted Receipts	6,633	19,927	44,126	59,360	43,710
Operating Transfers from Other Funds	589,099	-	-	-	-
Total Expenditures	\$1,215,102	\$429,998	\$685,423	\$778,020	\$842,190
FTE Authorization	4.0	4.0	4.0	4.0	4.0

The Agency

Governor's Commission on Disabilities



Personnel

Governor's Commission On Disabilities Central Management

	Grade	FY 2017		FY 2018	
		FTE	Cost	FTE	Cost
Classified					
EXECUTIVE SECRETARY GOVERNOR'S COMM ON	00132A	1.0	86,968	1.0	86,968
Subtotal		1.0	\$86,968	1.0	\$86,968
Unclassified					
ASSISTANT ADA COORDINATOR	00824A	2.0	117,426	2.0	117,426
CASE MANAGEMENT COORDINATOR	00819A	1.0	42,762	1.0	43,949
Subtotal		3.0	\$160,188	3.0	\$161,375
Total Salaries		4.0	\$247,156	4.0	\$248,343
Benefits					
Payroll Accrual			1,428		1,431
FICA			18,907		18,999
Retiree Health			14,756		14,850
Health Benefits			41,266		48,978
Retirement			64,212		63,699
Subtotal			\$140,569		\$147,957
Total Salaries and Benefits		4.0	\$387,725	4.0	\$396,300
Cost Per FTE Position (Excluding Temporary and Seasonal)			\$96,931		\$99,075
Statewide Benefit Assessment			\$11,160		\$10,494
Payroll Costs		4.0	\$398,885	4.0	\$406,794
Purchased Services					
Clerical and Temporary Services			16,418		24,279
Legal Services			300		400
Other Contracts			21,480		25,613
Buildings and Ground Maintenance			1,188		1,212
Training and Educational Services			2,250		3,000
Medical Services			315		360
Subtotal			\$41,951		\$54,864
Total Personnel		4.0	\$440,836	4.0	\$461,658
Distribution By Source Of Funds					
General Revenue		4.0	\$388,266	4.0	\$421,984
Federal Funds		-	\$8,700	-	\$11,600
Restricted Receipts		-	\$43,870	-	\$28,074
Total All Funds		4.0	\$440,836	4.0	\$461,658

Performance Measures

Governor's Commission On Disabilities

Barrier-Free Voting

The Commission seeks to ensure voters with disabilities are able to cast votes independently, in secret, and at the same polling location as their neighbors. The figures below represent the percentage of polling places barrier-free on Election Day. Measure includes data from "special elections" that take place in RI.

	2014	2015	2016	2017	2018
Target	100%	100%	100%	100%	100%
Actual	71.9%	81.1%	74.1%	--	--

Performance for this measure is reported by state fiscal year.

Commission Advocacy

The Commission's goal is to ensure that people with disabilities have the opportunity to exercise all rights and responsibilities accorded to RI citizens and are able to reach their maximum potential. The figures below represent the percentage of successful outcomes for GCD's advocacy for disability-friendly policy adopted by the General Assembly (laws and budget articles), Executive Branch and General Officers (regulations), and Judiciary and quasi-judicial entities (decisions). [Note: Legislation that was recommended as "beneficial if amended", that were neither amended nor enacted, has been re-categorized as "not a successful outcome".]

	2014	2015	2016	2017	2018
Target	75%	75%	75%	75%	75%
Actual	52.4%	35.8%	48.7%	--	--

Performance for this measure is reported by state fiscal year.

Accessibility Discrimination Complaint Resolution

The Commission works to foster voluntary compliance with federal and state disability rights laws and regulations. The figures below represent the percentage of accessibility complaints resolved prior to hearing.

	2014	2015	2016	2017	2018
Target	70%	70%	70%	70%	70%
Actual	95.1%	91.1%	82.8%	--	--

Performance for this measure is reported by state fiscal year.

Employment Discrimination Complaint Resolution

Through education, technical assistance, and conflict resolution with employers, employees, and prospective employees, GCD promotes voluntary compliance with federal and state disability rights laws and regulations. The figures below reflect the percentage of employment discrimination complaints voluntarily resolved.

	2014	2015	2016	2017	2018
Target	80%	80%	50%	50%	50%
Actual	66.7%	100%	100%	--	--

Performance for this measure is reported by state fiscal year.