



**Gina M. Raimondo,
Governor**

**State of Rhode Island and
Providence Plantations
Fiscal Year 2018
Budget**

**Volume I – General Government
and Quasi-Public Agencies**

Agency

Executive Office Of Commerce

Agency Mission

The Executive Office of Commerce is authorized and established as the State's lead agency for economic development throughout Rhode Island for the following purposes:

To promote and encourage the preservation, expansion, and sound development of new and existing industry, business, commerce, agriculture, tourism, and recreational facilities in the State.

To create opportunities for economic stability and employment through a business climate that fosters opportunity for all Rhode Islanders.

Agency Description

The Executive Office of Commerce serves as the principal agency of the executive branch of State government for managing the promotion of commerce and the economy within the State. The Secretary of Commerce, appointed by the Governor with the advice and consent of the Senate, oversees the Executive Office of Commerce. The Secretary is charged with coordinating a cohesive direction of the State's economic development activities. The agency operates the following functions:

Department of Business Regulation

Office of Health Insurance Commissioner

Housing and Community Development

Rhode Island Commerce Corporation (and all pass-through grant appropriations)

I-195 Redevelopment District Commission

Economic Development Initiatives Fund

Commerce Programs

Other special legislative programs and initiatives

Statutory History

The Executive Office of Commerce was created by the 2013 General Assembly for the purpose of developing an integrated system of economic development activities. RIGL 42-64.19 establishes the Executive Office of Commerce.

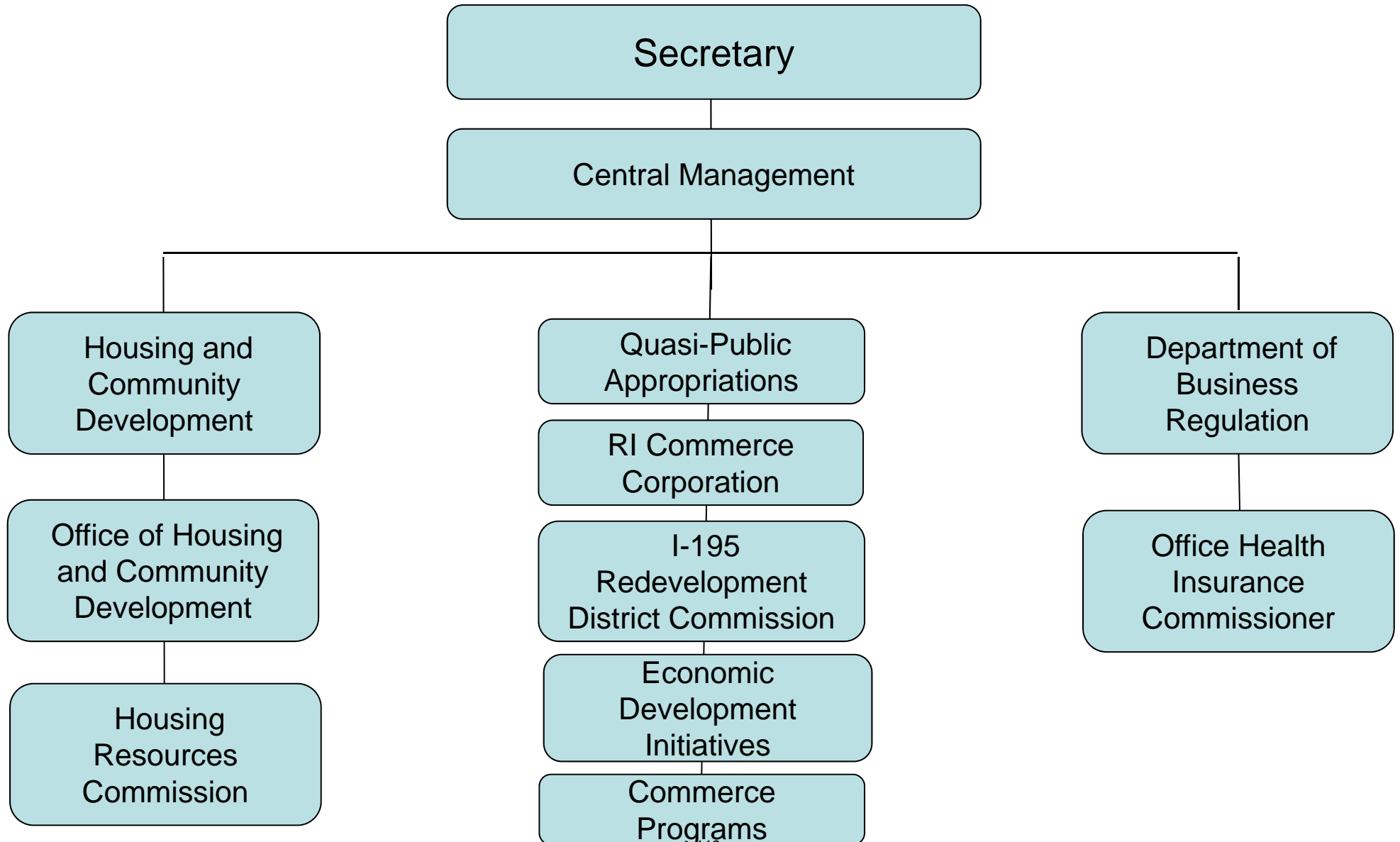
Budget

Executive Office Of Commerce

	FY 2015 Audited	FY 2016 Audited	FY 2017 Enacted	FY 2017 Revised	FY 2018 Recommend
Expenditures By Program					
Central Management	203,145	718,500	1,200,198	1,255,549	1,363,714
Housing and Community Development	-	13,320,595	23,158,132	23,630,764	22,692,415
Quasi-Public Appropriations	-	16,418,704	13,156,714	12,717,513	15,586,714
Economic Development Initiatives Fund	-	42,958,000	36,900,000	38,400,000	33,850,000
Commerce Programs	-	-	5,000,000	3,500,000	2,800,000
Total Expenditures	\$203,145	\$73,415,799	\$79,415,044	\$79,503,826	\$76,292,843
Expenditures By Object					
Personnel	134,648	1,683,173	2,386,349	2,467,370	2,614,378
Operating Supplies and Expenses	100	40,471	101,981	117,739	159,119
Assistance and Grants	-	12,110,688	23,020,000	22,298,954	22,429,382
Subtotal: Operating Expenditures	134,748	13,834,332	25,508,330	24,884,063	25,202,879
Capital Purchases and Equipment	-	8,224	1,300,000	753,933	2,903,250
Operating Transfers	68,397	59,573,243	52,606,714	53,865,830	48,186,714
Total Expenditures	\$203,145	\$73,415,799	\$79,415,044	\$79,503,826	\$76,292,843
Expenditures By Funds					
General Revenue	203,145	60,458,832	55,574,117	55,735,212	51,342,819
Federal Funds	-	10,016,268	17,790,927	18,266,931	17,890,642
Restricted Receipts	-	2,681,142	4,750,000	4,750,000	4,159,382
Operating Transfers from Other Funds	-	259,557	1,300,000	751,683	2,900,000
Total Expenditures	\$203,145	\$73,415,799	\$79,415,044	\$79,503,826	\$76,292,843
FTE Authorization	5.0	16.0	16.0	16.0	17.0

The Agency

Executive Office of Commerce



Personnel

Executive Office Of Commerce Agency Summary

	Grade	FY 2017		FY 2018	
		FTE	Cost	FTE	Cost
Classified		11.0	802,889	12.0	870,089
Unclassified		5.0	740,392	5.0	737,345
Subtotal		16.0	\$1,543,281	17.0	\$1,607,434
Interdepartmental Transfer		-	55,710	-	65,868
Turnover		-	(\$10,322)	-	-
Subtotal		-	\$45,388	-	\$65,868
Total Salaries		16.0	\$1,588,669	17.0	\$1,673,302
Benefits					
Payroll Accrual			9,159		9,526
Retiree Health			94,844		100,066
Health Benefits			168,825		198,662
FICA			113,211		119,303
Retirement			420,170		436,208
Subtotal			\$806,209		\$863,765
Total Salaries and Benefits		16.0	\$2,394,878	17.0	\$2,537,067
Cost Per FTE Position (Excluding Temporary and Seasonal)			\$149,586		\$149,151
Statewide Benefit Assessment			\$72,492		\$77,311
Payroll Costs		16.0	\$2,467,370	17.0	\$2,614,378
Total Personnel		16.0	\$2,467,370	17.0	\$2,614,378
Distribution By Source Of Funds					
General Revenue		10.5	\$1,785,382	10.5	\$1,879,725
Federal Funds		5.6	\$681,988	6.6	\$734,653
Total All Funds		16.0	\$2,467,370	17.0	\$2,614,378

Performance Measures

Executive Office Of Commerce

New Jobs Created with Assistance from State Incentive Programs

The figures below represent the number of new jobs created since January 2016 by businesses that received assistance from State incentive programs. [Note: Calendar year 2016 data is as of 9/30/2016.]

	2014	2015	2016	2017	2018
Target	--	--	250	1,000	1,000
Actual	--	--	490	--	--

Performance for this measure is reported by calendar year.

New Development Created with Assistance from State Incentive Programs

The figures below represent the square feet of new development created since January 2016 with assistance from State incentive programs. [Note: Calendar year 2016 data is as of 9/30/2016.]

	2014	2015	2016	2017	2018
Target	--	--	180,000	600,000	600,000
Actual	--	--	2,045,000	--	--

Performance for this measure is reported by calendar year.

Private Capital Leveraged for New Development

The figures below represent the total dollars of private capital leveraged for new development since January 2016. [Note: Calendar year 2016 data is as of 9/30/2016.]

	2014	2015	2016	2017	2018
Target	--	--	\$48,000,000	\$160,000,000	\$160,000,000
Actual	--	--	\$453,000,000	--	--

Performance for this measure is reported by calendar year.

Businesses Assisted by Client Services Team

The figures below represent the number of businesses assisted by the Commerce Corporation's Client Services Team since January 2016. [Note: Calendar year 2016 data is as of 9/30/2016.]

	2014	2015	2016	2017	2018
Target	--	--	2,500	5,000	5,000
Actual	--	--	2,270	--	--

Performance for this measure is reported by calendar year.

Performance Measures

Executive Office Of Commerce

Tourist and Visitor Expenditures

The figures below represent the increase in annual tourist and visitor expenditures over the baseline of 2015. [Note: This report is released annually; 2016 interim figures are not available.]

	2014	2015	2016	2017	2018
Target	--	--	\$50,000,000	\$200,000,000	\$200,000,000
Actual	--	--	--	--	--

Performance for this measure is reported by calendar year.

The Program

Executive Office Of Commerce Central Management

Program Mission

To coordinate the administration and financing of the functions within the Executive Office of Commerce.

Program Description

The Central Management function of the Executive Office of Commerce is overseen by the Secretary of Commerce. This unit oversees the various functions of the Executive Office of Commerce and is responsible for the strategic planning, administration, and financing of the agency.

Statutory History

The Executive Office of Commerce was created by the 2013 General Assembly for the purpose of developing an integrated system of economic development activities. RIGL 42-64.19 establishes the Executive Office of Commerce.

The Budget

Executive Office Of Commerce Central Management

	2015 Audited	2016 Audited	2017 Enacted	2017 Revised	2018 Recommend
Expenditures By Subprogram					
Operations	203,145	718,500	1,200,198	1,255,549	1,363,714
Total Expenditures	\$203,145	\$718,500	\$1,200,198	\$1,255,549	\$1,363,714
Expenditures By Object					
Personnel	134,648	503,768	1,144,796	1,187,105	1,252,890
Operating Supplies and Expenses	100	9,969	55,402	66,194	107,574
Subtotal: Operating Expenditures	134,748	513,737	1,200,198	1,253,299	1,360,464
Capital Purchases and Equipment	-	8,224	-	2,250	3,250
Operating Transfers	68,397	196,539	-	-	-
Total Expenditures	\$203,145	\$718,500	\$1,200,198	\$1,255,549	\$1,363,714
Expenditures By Funds					
General Revenue	203,145	718,500	1,200,198	1,255,549	1,363,714
Total Expenditures	\$203,145	\$718,500	\$1,200,198	\$1,255,549	\$1,363,714

Personnel

Executive Office Of Commerce Central Management

	Grade	FY 2017		FY 2018	
		FTE	Cost	FTE	Cost
Classified					
ASSISTANT ADMINISTRATOR, FINANCIAL	00134A	0.3	17,269	0.3	17,902
Subtotal		0.3	\$17,269	0.3	\$17,902
Unclassified					
SECRETARY OF COMMERCE	00856A	1.0	205,706	1.0	205,706
DEPUTY SECRETARY OF COMMERCE	00853A	1.0	164,497	1.0	170,460
DEPUTY CHIEF OF STAFF/POLICY	00845A ¹	1.0	160,417	1.0	144,121
GENERAL COUNSEL (OFFICE OF COMMERCE)	00846A	1.0	127,439	1.0	131,715
EXECUTIVE ASSISTANT	00836A	1.0	82,333	1.0	85,343
Subtotal		5.0	\$740,392	5.0	\$737,345
Interdepartmental Transfer		-	36,620	-	65,868
Turnover		-	(10,322)	-	-
Subtotal		-	\$26,298	-	\$65,868
Total Salaries		5.3	\$783,959	5.3	\$821,115
Benefits					
Payroll Accrual			4,505		4,609
FICA			51,648		54,109
Retiree Health			46,802		49,105
Health Benefits			58,471		71,458
Retirement			206,494		213,492
Subtotal			\$367,920		\$392,773
Total Salaries and Benefits		5.3	\$1,151,879	5.3	\$1,213,888
Cost Per FTE Position (Excluding Temporary and Seasonal)			\$219,406		\$231,217
Statewide Benefit Assessment			\$35,226		\$39,002
Payroll Costs		5.3	\$1,187,105	5.3	\$1,252,890
Total Personnel		5.3	\$1,187,105	5.3	\$1,252,890
Distribution By Source Of Funds					
General Revenue		5.3	\$1,187,105	5.3	\$1,252,890
Total All Funds		5.3	\$1,187,105	5.3	\$1,252,890

¹ Includes military differential pay.

The Program

Executive Office Of Commerce Housing and Community Development

Program Mission

To provide financial and operational support for all housing programs administered by the Housing Resources Commission, federal Community Development Block (CDBG) program, and related programs.

To provide opportunities for healthy and affordable housing through production and the coordination of the homeless system and implementation of the State's plan to end homelessness.

Program Description

Housing and Community Development is comprised of the Housing Resources Commission (HRC) and the Office of Community Development, which administers the federal Community Development Block (CDBG) Grant and related programs.

The Housing Resources Commission (HRC) is responsible for the disbursement of funds for a rental assistance program, which will provide housing to homeless individuals and families by non-profit homeless service providers.

Statutory History

RIGL 42-64.19-7(h) transfers the housing and community development functions from the Department of Administration to the Executive Office of Commerce.

The Budget

Executive Office Of Commerce Housing and Community Development

	2015 Audited	2016 Audited	2017 Enacted	2017 Revised	2018 Recommend
Expenditures By Subprogram					
Housing and Community Development	-	10,639,453	18,408,132	18,880,764	18,533,033
Housing Resources Commission	-	2,681,142	4,750,000	4,750,000	4,159,382
Total Expenditures	-	\$13,320,595	\$23,158,132	\$23,630,764	\$22,692,415
Expenditures By Object					
Personnel	-	1,179,405	1,241,553	1,280,265	1,361,488
Operating Supplies and Expenses	-	30,502	46,579	51,545	51,545
Assistance and Grants	-	12,110,688	21,870,000	22,298,954	21,279,382
Subtotal: Operating Expenditures	-	13,320,595	23,158,132	23,630,764	22,692,415
Total Expenditures	-	\$13,320,595	\$23,158,132	\$23,630,764	\$22,692,415
Expenditures By Funds					
General Revenue	-	623,185	617,205	613,833	642,391
Federal Funds	-	10,016,268	17,790,927	18,266,931	17,890,642
Restricted Receipts	-	2,681,142	4,750,000	4,750,000	4,159,382
Total Expenditures	-	\$13,320,595	\$23,158,132	\$23,630,764	\$22,692,415

Personnel

Executive Office Of Commerce Housing and Community Development

	Grade	FY 2017		FY 2018	
		FTE	Cost	FTE	Cost
Classified					
CHIEF OFFICE OF HOUSING AND COMMUNITY PROGRAMMING SERVICES OFFICER	00138A ²	1.0	106,030	1.0	106,031
PRINCIPAL PLANNER	00131A	1.0	76,725	1.0	76,725
SUPERVISOR LOCAL GOVERNMENT ASSISTANCE	03529A	1.0	73,824	1.0	73,824
SUPERVISOR LOCAL GOVERNMENT ASSISTANCE	00833A	1.0	71,678	1.0	71,678
ASSISTANT ADMINISTRATOR, FINANCIAL	00133A	1.0	71,507	1.0	71,507
HOUSING COMMISSION COORDINATOR	00134A	0.8	51,808	0.8	53,706
PRINCIPAL PLANNER	00128A	3.0	201,479	3.0	201,479
PRINCIPAL PLANNER	00829A	2.0	132,569	3.0	197,237
Subtotal		10.8	\$785,620	11.8	\$852,187
Interdepartmental Transfer		-	19,090	-	-
Subtotal		-	\$19,090	-	-
Total Salaries		10.8	\$804,710	11.8	\$852,187
Benefits					
Payroll Accrual			4,654		4,917
FICA			61,563		65,194
Retiree Health			48,042		50,961
Health Benefits			110,354		127,204
Retirement			213,676		222,716
Subtotal			\$438,289		\$470,992
Total Salaries and Benefits		10.8	\$1,242,999	11.8	\$1,323,179
Cost Per FTE Position (Excluding Temporary and Seasonal)			\$115,520		\$112,515
Statewide Benefit Assessment			\$37,266		\$38,309
Payroll Costs		10.8	\$1,280,265	11.8	\$1,361,488
Total Personnel		10.8	\$1,280,265	11.8	\$1,361,488
Distribution By Source Of Funds					
General Revenue		5.2	\$598,277	5.2	\$626,835
Federal Funds		5.6	\$681,988	6.6	\$734,653
Total All Funds		10.8	\$1,280,265	11.8	\$1,361,488

² New position to support Office of Housing and Community Development with federal grant management and is funded 100% with federal funds.

The Program

Executive Office Of Commerce Quasi-Public Appropriations

Program Mission

To supervise the work of the Rhode Island Commerce Corporation, the I-195 Redevelopment District Commission, and special legislative programs and initiatives.

Program Description

This program includes appropriations made to the Rhode Island Commerce Corporation, the I-195 Redevelopment District Commission, and other special legislative programs and initiatives.

Statutory History

RIGL 42-64.19-6(1) charges the Secretary of Commerce to supervise the work of the Rhode Island Commerce Corporation. RIGL 42-64 establishes the Rhode Island Commerce Corporation. RIGL 42-64.14 creates the I-195 Redevelopment Act of 2011. RIGL 42-64.14-5 creates the I-195 Redevelopment District Commission.

The Budget

Executive Office Of Commerce Quasi-Public Appropriations

	2015 Audited	2016 Audited	2017 Enacted	2017 Revised	2018 Recommend
Expenditures By Subprogram					
RI Commerce Corporation	-	7,394,514	7,394,514	7,434,514	7,474,514
RI Commerce Corp. - Executive Office of Commerce Programs	-	3,600,000	-	-	-
RI Commerce Corporation Pass Through Grants	-	4,319,866	3,701,200	3,701,200	4,451,200
I-195 Redevelopment District	-	1,104,324	2,061,000	1,581,799	3,661,000
Total Expenditures	-	\$16,418,704	\$13,156,714	\$12,717,513	\$15,586,714
Expenditures By Object					
Assistance and Grants	-	-	1,150,000	-	1,150,000
Subtotal: Operating Expenditures	-	-	1,150,000	-	1,150,000
Capital Purchases and Equipment	-	-	1,300,000	751,683	2,900,000
Operating Transfers	-	16,418,704	10,706,714	11,965,830	11,536,714
Total Expenditures	-	\$16,418,704	\$13,156,714	\$12,717,513	\$15,586,714
Expenditures By Funds					
General Revenue	-	16,159,147	11,856,714	11,965,830	12,686,714
Operating Transfers from Other Funds	-	259,557	1,300,000	751,683	2,900,000
Total Expenditures	-	\$16,418,704	\$13,156,714	\$12,717,513	\$15,586,714

The Program

Executive Office Of Commerce

Economic Development Initiatives Fund

Program Mission

Encompasses the Economic Development Initiatives Fd which is utilized for economic development initiatives and programs.

Program Description

This program includes those economic development initiatives and programs that will enable the Executive Office of Commerce to carry out its mission of promoting and developing commerce and creating opportunity for all Rhode Islanders.

Statutory History

The Executive Office of Commerce was created by the 2013 General Assembly for the purpose of developing an integrated system of economic development activities. RIGL 42-64.19 establishes the Executive Office of Commerce as the state's lead agency for economic development throughout Rhode Island. The Economic Development Initiatives Fund was initially enacted as part of the FY 2016 Appropriations Act.

The Budget

Executive Office Of Commerce Economic Development Initiatives Fund

	2015 Audited	2016 Audited	2017 Enacted	2017 Revised	2018 Recommend
Expenditures By Subprogram					
Economic Development Initiatives Fund	-	42,958,000	36,900,000	38,400,000	33,850,000
Total Expenditures	-	\$42,958,000	\$36,900,000	\$38,400,000	\$33,850,000
Expenditures By Object					
Operating Transfers	-	42,958,000	36,900,000	38,400,000	33,850,000
Total Expenditures	-	\$42,958,000	\$36,900,000	\$38,400,000	\$33,850,000
Expenditures By Funds					
General Revenue	-	42,958,000	36,900,000	38,400,000	33,850,000
Total Expenditures	-	\$42,958,000	\$36,900,000	\$38,400,000	\$33,850,000

The Program

Executive Office Of Commerce Commerce Programs

Program Mission

To house the economic initiatives that will carry out the mission of the Executive Office of Commerce.

Program Description

This program includes those economic development initiatives and programs that will enable the Executive Office of Commerce to carry out its mission of promoting and developing commerce and creating opportunity for all Rhode Islanders.

Statutory History

The Executive Office of Commerce was created by the 2013 General Assembly for the purpose of developing an integrated system of economic development activities. RIGL 42-64.19 establishes the Executive Office of Commerce as the state's lead agency for economic development throughout Rhode Island.

The Budget

Executive Office Of Commerce Commerce Programs

	2015 Audited	2016 Audited	2017 Enacted	2017 Revised	2018 Recommend
Expenditures By Subprogram					
Economic Initiatives	-	-	5,000,000	3,500,000	2,800,000
Total Expenditures	-	-	\$5,000,000	\$3,500,000	\$2,800,000
Expenditures By Object					
Operating Transfers	-	-	5,000,000	3,500,000	2,800,000
Total Expenditures	-	-	\$5,000,000	\$3,500,000	\$2,800,000
Expenditures By Funds					
General Revenue	-	-	5,000,000	3,500,000	2,800,000
Total Expenditures	-	-	\$5,000,000	\$3,500,000	\$2,800,000