



**Gina M. Raimondo,
Governor**

**State of Rhode Island and
Providence Plantations
Fiscal Year 2018
Budget**

**Volume I – General Government
and Quasi-Public Agencies**

Agency

Executive Department

Agency Mission

To fulfill all responsibilities and duties in accordance with the Constitution and Laws of the State of Rhode Island.

To monitor all federal legislation and the federal budget for impact upon Rhode Island.

To process legislative and regulatory opportunities for the State of Rhode Island.

To obtain maximum federal funding for the State of Rhode Island.

To initiate reform and change in both government and the economy for the betterment of all Rhode Island Citizens.

Agency Description

The Office of the Governor is established under the Rhode Island Constitution as one of the general offices and is subject to election by the voters of the State. The Office of the Governor is responsible for the enactment of reform and change in state government for the betterment of the citizens of the State of Rhode Island. In accomplishing this task, the Office of the Governor coordinates the services of a staff of professionals to include the Legislative Affairs Office, Legal Office, Communications Office, and Constituent Affairs Office.

Statutory History

The Governor is the head of the Executive Branch of State government. Among the powers and duties of the Governor under the State Constitution are: faithfully executing the laws (Art IX, Section 2); commanding the state's military and naval forces (Article IX, Section 3); granting reprieves (Articles IX, Section 2); and pardons (Article IX, Section 13); convening special sessions of the general assembly (Article IX, Section 7); and; preparing and presenting to the general assembly an annual state budget (Article IX, Section 15). Each Administration creates its own Office of the Governor for the purpose of governing the State of Rhode Island. The Governor signed Executive Order 11-09 in September, 2011 establishing the Health Benefits Exchange within the Office of the Governor in response to the federal Affordable Care Act 1311 (d)(6). The functions of the exchange has been transferred to the Department of Administration.

The administration of Governor Gina M. Raimondo began on January 6, 2015.

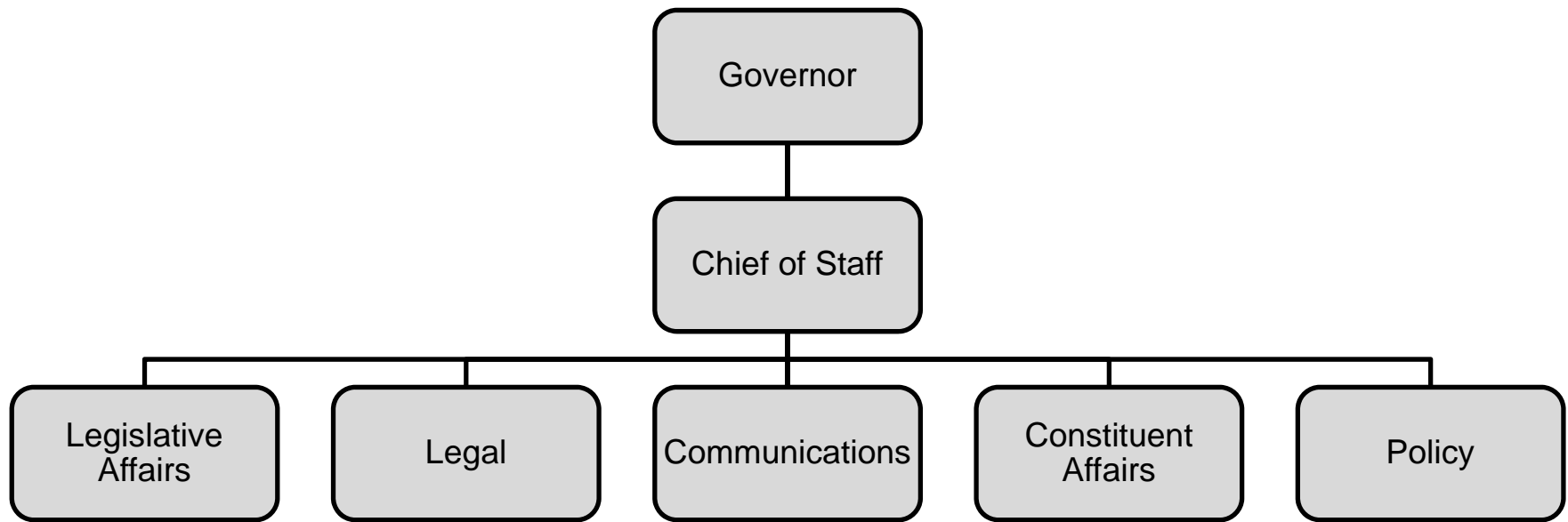
Budget

Executive Department

	FY 2015 Audited	FY 2016 Audited	FY 2017 Enacted	FY 2017 Revised	FY 2018 Recommend
Expenditures By Program					
Central Management	4,401,947	4,755,102	5,091,069	5,375,482	5,397,554
Office of Economic Recovery and Reinvestment	(1)	-	-	-	-
Rhode Island Health Benefits Exchange	(53)	-	-	-	-
Total Expenditures	\$4,401,893	\$4,755,102	\$5,091,069	\$5,375,482	\$5,397,554
Expenditures By Object					
Personnel	4,040,196	4,500,262	4,555,202	4,547,615	4,861,687
Operating Supplies and Expenses	342,678	250,030	265,967	557,967	265,967
Assistance and Grants	-	250	250,000	250,000	250,000
Subtotal: Operating Expenditures	4,382,874	4,750,542	5,071,169	5,355,582	5,377,654
Capital Purchases and Equipment	19,019	4,560	19,900	19,900	19,900
Total Expenditures	\$4,401,893	\$4,755,102	\$5,091,069	\$5,375,482	\$5,397,554
Expenditures By Funds					
General Revenue	4,401,947	4,755,102	5,091,069	5,375,482	5,397,554
Federal Funds	(53)	-	-	-	-
Restricted Receipts	(1)	-	-	-	-
Total Expenditures	\$4,401,893	\$4,755,102	\$5,091,069	\$5,375,482	\$5,397,554
FTE Authorization	45.0	45.0	45.0	45.0	45.0

The Agency

Executive Department



Personnel

Executive Department Central Management

	Grade	FY 2017		FY 2018	
		FTE	Cost	FTE	Cost
Unclassified					
LEGISLATIVE DIRECTOR (GOVERNORS OFFICE)	08350A	1.0	178,899	1.0	178,899
CHIEF OF STAFF (GOVERNOR'S OFFICE)	08353A	1.0	170,460	1.0	175,452
SENIOR LEGAL COUNSEL (GOVERNOR'S OFFICE)	08347A	1.0	155,385	1.0	155,385
DEPUTY CHIEF OF STAFF	08351A	1.0	155,381	1.0	159,932
DEPUTY CHIEF OF STAFF	08348A	2.0	292,603	2.0	301,172
DIRECTOR OF GOVERNOR'S OFFICE	08346A	1.0	146,026	1.0	150,797
GOVERNOR	00527F	1.0	139,695	1.0	139,695
DEPUTY COUNSEL	08345A	3.0	371,131	3.0	383,066
DIR OF COMMUNICATIONS (GOV OFF)	08346A	1.0	122,186	1.0	126,951
DEPUTY DIRECTOR OF COMMUNITCATIONS	08337A	1.0	112,643	1.0	117,412
SPECIAL COUNSEL	08338A	1.0	98,157	1.0	101,132
ASSISTANT DIRECTOR POLICY OFFICE	08339A	2.0	182,582	2.0	187,929
DIRECTOR OF PUBLIC ENGAGEMENT	08332A	1.0	82,752	1.0	84,990
DIRECTOR OF POLICY DEVELOPMENT	08335A	1.0	77,131	1.0	79,947
POLICY ADVISOR (GOVERNOR'S OFFICE)	08333A	1.0	74,012	1.0	74,012
DEPUTY DIRECTOR	08332A	1.0	69,243	1.0	71,780
SENIOR POLICY ANALYST/PUBLIC INFORMATION	08331A	1.0	69,144	1.0	71,169
EXEC ASSISTANT TO THE GOVERNOR	08327A	1.0	67,417	1.0	69,391
SPECIAL ASST TO THE GOVERNOR	08326A	1.0	64,853	1.0	66,752
OFFICE MANAGER (GOVERNOR'S OFFICE)	08328A	1.0	63,707	1.0	65,573
DIRECTOR OF PUBLIC AFFAIRS	08339A	1.0	61,751	1.0	63,559
LEGAL ADMINISTRATIVE ASSISTANT	08326A	1.0	58,779	1.0	60,521
POLICY ANALYST	00833A	2.0	114,368	2.0	117,717
DIR OF CONSTITUENT SVS	08325A	1.0	56,620	1.0	58,278
DIRECTOR OF SCHEDULING (GOVERNORS OFFICE)	08325A	1.0	56,620	1.0	58,278
ASSISTANT TO THE GOVERNOR FOR SPECIAL	08324A	2.0	110,080	2.0	113,964
ADMINISTRATIVE ASSISTANT	08325A	1.0	53,003	1.0	54,757
OUTREACH MANAGER	08324A	1.0	52,559	1.0	54,139
SPECIAL ASST TO THE GOVERNOR	08322A	1.0	48,916	1.0	50,349
APPOINTMENT SPECIAL ASSISTANT (GOVERNORS	08321A	1.0	48,658	1.0	50,083
CONSTITUENT SERV ASSOCIATE II	08319A	1.0	44,111	1.0	45,403
PROTOCOL MANAGER	08319A	1.0	44,070	1.0	45,361
SPEC ASST TO DEP CHF OF STAFF	08319A	1.0	42,860	1.0	42,860
CONSTITUENT SERV ASSOCIATE II	08319A	2.0	84,948	2.0	87,499
LEGISLATIVE AIDE (GOV OFF)	08317A	1.0	41,542	1.0	40,421
DIRECTOR OF APPOINTMENTS	00883F	1.0	40,000	1.0	75,000
SENIOR ADMINISTRATIVE AIDE	08317A	1.0	39,920	1.0	41,089
COMMUNICATIONS ASSOCIATE	08313A	1.0	36,471	1.0	37,539
Subtotal		45.0	\$3,728,683	45.0	\$3,858,253

Personnel

Executive Department Central Management

	Grade	FY 2017		FY 2018	
		FTE	Cost	FTE	Cost
Interdepartmental Transfer		-	(512,357)	-	(521,466)
Turnover		-	(258,556)	-	(231,175)
Subtotal		-	(\$770,913)	-	(\$752,641)
Total Salaries		45.0	\$2,957,770	45.0	\$3,105,612
Benefits					
Payroll Accrual			17,069		18,790
FICA			213,308		234,813
Retiree Health			176,576		194,702
Health Benefits			270,230		323,794
Retirement			779,258		846,730
Subtotal			\$1,456,441		\$1,618,829
Total Salaries and Benefits		45.0	\$4,414,211	45.0	\$4,724,441
Cost Per FTE Position (Excluding Temporary and Seasonal)			\$98,094		\$104,988
Statewide Benefit Assessment			\$132,904		\$136,746
Payroll Costs		45.0	\$4,547,115	45.0	\$4,861,187
Purchased Services					
Other Contracts			400		400
Buildings and Ground Maintenance			100		100
Subtotal			\$500		\$500
Total Personnel		45.0	\$4,547,615	45.0	\$4,861,687
Distribution By Source Of Funds					
General Revenue		45.0	\$4,547,615	45.0	\$4,861,687
Total All Funds		45.0	\$4,547,615	45.0	\$4,861,687