



**Gina M. Raimondo,  
Governor**

**State of Rhode Island and  
Providence Plantations  
Fiscal Year 2018  
Budget**

**Volume I – General Government  
and Quasi-Public Agencies**

# Agency

---

## Board Of Elections

---

### Agency Mission

To protect the integrity of the electoral process and to effectively and efficiently administer the provisions of United States and Rhode Island election laws.

### Agency Description

The Board of Elections supervises all elections and state and local referenda. The Board supervises the maintenance, preparation and delivery of electronic optical-scan voting equipment, election return forms, and other supplies used at each polling place. The Board instructs and certifies all election officials assigned to polls and prepares and distributes poll worker guides and related materials. The Board also appoints, trains, and assigns bi-partisan pairs of supervisors for the mail ballot program for institutionally confined persons. The Board certifies the results of all elections under its jurisdiction, including tabulating machine and mail ballot votes cast; conducts recounts; certifies results to the Secretary of State; issues certificates of election to candidates; and provides an official tabulation of returns.

The Board oversees voter registration and public education activities and provides all registration materials used in the state. The Board trains and supervises all individuals who serve as statewide voter registration agents. The agency conducts voter registration drives throughout the State and at each institution of higher education in Rhode Island. It oversees and coordinates the registration of voters at other state agencies and departments as part of the National Voter Registration Act. The Board carries out the mandates of the Rhode Island Campaign Contributions and Expenditures Reporting Act (the "Act"). The agency oversees and monitors the campaign finance activities of candidates, political action committees, and state vendors. The Board's responsibilities also include the development, printing and distribution of forms required for candidate, committee, and vendor reports as well as the publication of manuals describing and explaining the requirements set forth in the statutes. The Board reviews and makes available for inspection all reports filed, prepares summaries and an annual report, and is authorized to investigate suspected violations of the Act. The agency oversees and administers the public financing of campaigns program for each of the State's five general offices.

### Statutory History

Chapter 825 of the Public Laws of 1901 created the "State Returning Board," which was replaced by Chapter 1040 of the Public Laws of 1941 which created the "Board of Elections" as a partisan board. Chapter 312 of the Public Laws of 1979 amended the law to establish the Board of Elections as a non-partisan board. R.I.G.L. 17-7 sets forth its duties and powers. R.I.G.L. 17-25 sets out the mandates of the Rhode Island Campaign Contributions and Expenditure Reporting Act (public financing of campaigns). R.I.G.L. 42-6 provides for the registration of voters at other state agencies. R.I.G.L. 17-27 provides for reporting requirements and monitoring of political contributions by state vendors. R.I.G.L. 17-19 provides for the use of an optical scan precinct count voting system in state elections.

# Budget

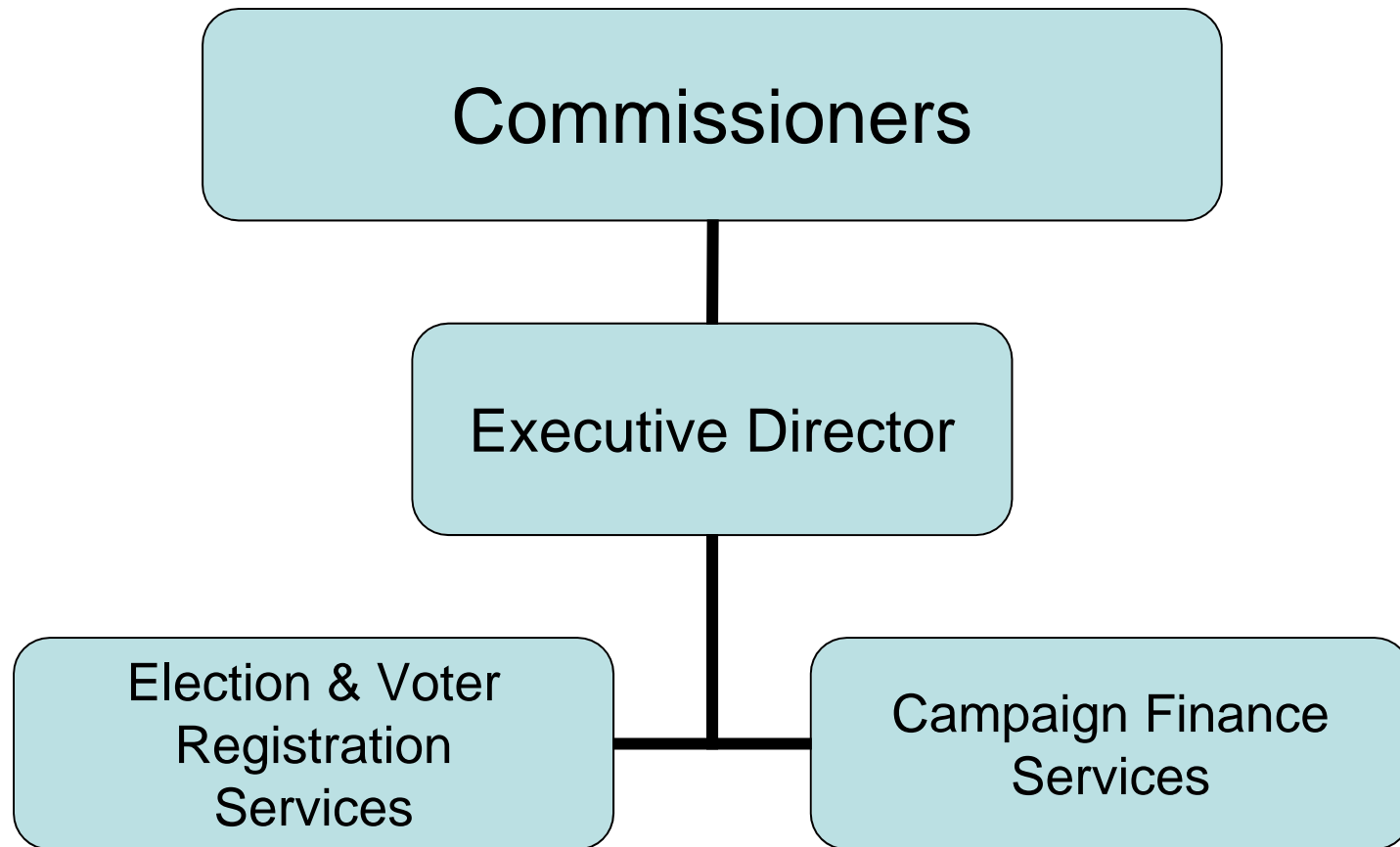
## Board Of Elections

	FY 2015 Audited	FY 2016 Audited	FY 2017 Enacted	FY 2017 Revised	FY 2018 Recommend
<b>Expenditures By Program</b>					
Central Management	4,656,136	1,714,512	1,982,707	2,068,676	1,548,735
<b>Total Expenditures</b>	<b>\$4,656,136</b>	<b>\$1,714,512</b>	<b>\$1,982,707</b>	<b>\$2,068,676</b>	<b>\$1,548,735</b>
<b>Expenditures By Object</b>					
Personnel	1,356,115	1,174,884	1,519,827	1,467,146	1,336,505
Operating Supplies and Expenses	618,193	473,153	454,880	579,930	204,230
Assistance and Grants	2,620,273	28,345	-	-	-
<b>Subtotal: Operating Expenditures</b>	<b>4,594,581</b>	<b>1,676,382</b>	<b>1,974,707</b>	<b>2,047,076</b>	<b>1,540,735</b>
Capital Purchases and Equipment	61,555	38,130	8,000	21,600	8,000
<b>Total Expenditures</b>	<b>\$4,656,136</b>	<b>\$1,714,512</b>	<b>\$1,982,707</b>	<b>\$2,068,676</b>	<b>\$1,548,735</b>
<b>Expenditures By Funds</b>					
General Revenue	4,656,136	1,714,512	1,982,707	2,068,676	1,548,735
<b>Total Expenditures</b>	<b>\$4,656,136</b>	<b>\$1,714,512</b>	<b>\$1,982,707</b>	<b>\$2,068,676</b>	<b>\$1,548,735</b>
<b>FTE Authorization</b>	<b>11.0</b>	<b>11.0</b>	<b>12.0</b>	<b>12.0</b>	<b>12.0</b>

# The Agency

## Board of Elections

---



# Personnel

## Board Of Elections Central Management

	Grade	FY 2017		FY 2018	
		FTE	Cost	FTE	Cost
<b>Unclassified</b>					
EXECUTIVE DIRECTOR	00844A	1.0	145,994	1.0	126,951
PRINCIPAL PROJECTS MANAGER	00831A	1.0	86,924	1.0	86,924
SUPERVISING ACCOUNTANT	00831A	1.0	79,346	1.0	79,346
PLANNING AND PROGRAM DEVELOPMENT	00320A	3.0	150,638	3.0	151,987
ADMINISTRATIVE ASSISTANT	00823A	1.0	47,486	1.0	49,233
SENIOR ADMINISTRATIVE AIDE/TRAINING	00319A	1.0	45,071	1.0	46,673
CONFIDENTIAL SECRETARY	00817A	1.0	41,405	1.0	42,357
SENIOR RECEPTIONIST	00312A	1.0	40,681	1.0	40,681
CLERK/MACHINE DEMONSTRATOR/ASSISTANT	00313A	1.0	37,296	1.0	37,973
ADMINISTRATIVE ASSISTANT	00312A	1.0	36,317	1.0	36,965
COMMISSIONER-BOARD OF ELECTIONS	00510F	-	28,000	-	28,000
<b>Subtotal</b>		<b>12.0</b>	<b>\$739,158</b>	<b>12.0</b>	<b>\$727,090</b>
Overtime		-	10,189	-	-
Temporary and Seasonal		-	275,000	-	-
Turnover		-	(93,855)	-	-
<b>Subtotal</b>		<b>-</b>	<b>\$191,334</b>	<b>-</b>	<b>-</b>
<b>Total Salaries</b>		<b>12.0</b>	<b>\$930,492</b>	<b>12.0</b>	<b>\$727,090</b>
<b>Benefits</b>					
Payroll Accrual			3,663		4,041
Holiday			5,811		-
FICA			53,768		55,471
Retiree Health			36,847		47,008
Health Benefits			137,436		206,773
Retirement			141,521		182,972
<b>Subtotal</b>			<b>\$379,046</b>		<b>\$496,265</b>
<b>Total Salaries and Benefits</b>		<b>12.0</b>	<b>\$1,309,538</b>	<b>12.0</b>	<b>\$1,223,355</b>
<b>Cost Per FTE Position (Excluding Temporary and Seasonal)</b>			<b>\$86,212</b>		<b>\$101,946</b>
<b>Statewide Benefit Assessment</b>			<b>\$23,820</b>		<b>\$29,362</b>
<b>Payroll Costs</b>		<b>12.0</b>	<b>\$1,333,358</b>	<b>12.0</b>	<b>\$1,252,717</b>

# Personnel

---

## Board Of Elections Central Management

---

	Grade	FY 2017		FY 2018	
		FTE	Cost	FTE	Cost
<b>Purchased Services</b>					
Information Technology			12,000		12,000
Clerical and Temporary Services			1,000		1,000
Legal Services			120,000		70,000
Other Contracts			788		788
<b>Subtotal</b>			<b>\$133,788</b>		<b>\$83,788</b>
<b>Total Personnel</b>		<b>12.0</b>	<b>\$1,467,146</b>	<b>12.0</b>	<b>\$1,336,505</b>
<b>Distribution By Source Of Funds</b>					
General Revenue		12.0	\$1,467,146	12.0	\$1,336,505
<b>Total All Funds</b>		<b>12.0</b>	<b>\$1,467,146</b>	<b>12.0</b>	<b>\$1,336,505</b>