

State of Rhode Island and Providence Plantations

Budget



Fiscal Year 2017

Volume IV - Public Safety, Natural Resources and Transportation

Gina M. Raimondo, Governor

Agency

Judicial Department - Constitution

Agency Mission

In our mission to administer justice while maintaining our independence, we are duty bound to act with unflinching honor to serve and protect the ideals of democracy for the citizens of this state.

Agency Description

Rhode Island has a unified court system composed of six statewide courts. The Supreme Court is the court of last resort, the Superior Court is the court of general jurisdiction, and the Family, District, Traffic Tribunal, and Workers' Compensation Courts are courts of limited jurisdiction.

The entire system in Rhode Island is state-funded with the exception of probate courts, which are the responsibility of cities and towns, and the municipal courts, which are local courts of limited jurisdiction. The Chief Justice of the Supreme Court is the executive head of the Rhode Island Judiciary and has authority over the judicial budget. The Chief Justice appoints the State Court Administrator and an administrative staff to handle budgetary and general administrative functions. Under the direction of the Chief Justice, the State Court Administrator has control of judicial appropriations for all state courts, except those as provided otherwise by law. Each court has responsibility over its own operations and has a chief judge who appoints an administrator to handle internal court management.

Statutory History

The Judicial is one of the three branches of government defined in the Rhode Island Constitution. The powers and jurisdictions of the six courts are identified in the Rhode Island General Laws as follows: Title 8 Chapter 1, Supreme Court; Title 8 Chapter 2, Superior Court; Title 8 Chapter 10, Family Court; Title 8 Chapter 8, District Court; Title 28 Chapter 30, Workers' Compensation Court; and, Title 8 Chapter 8.2, Traffic Tribunal.

The budgetary and finance controls of the Judiciary are identified in the Rhode Island General Laws as follows: Title 8 Section 8-15-4, Appointment of Court Administrator and Assistants; Title 35 Section 35-3-1, Budget Officer – General Powers and Duties; Title 36 Section 36-4-2.1, Exemption from Merit System; Title 36 Section 36-4-16.4, Salaries of Directors, Judges, and Workers' Compensation Judges; Title 36 Section 36-6-1, Controller – Duties in General; and Title 37 Section 37-8-1, State House – State Office Building – Courthouses.

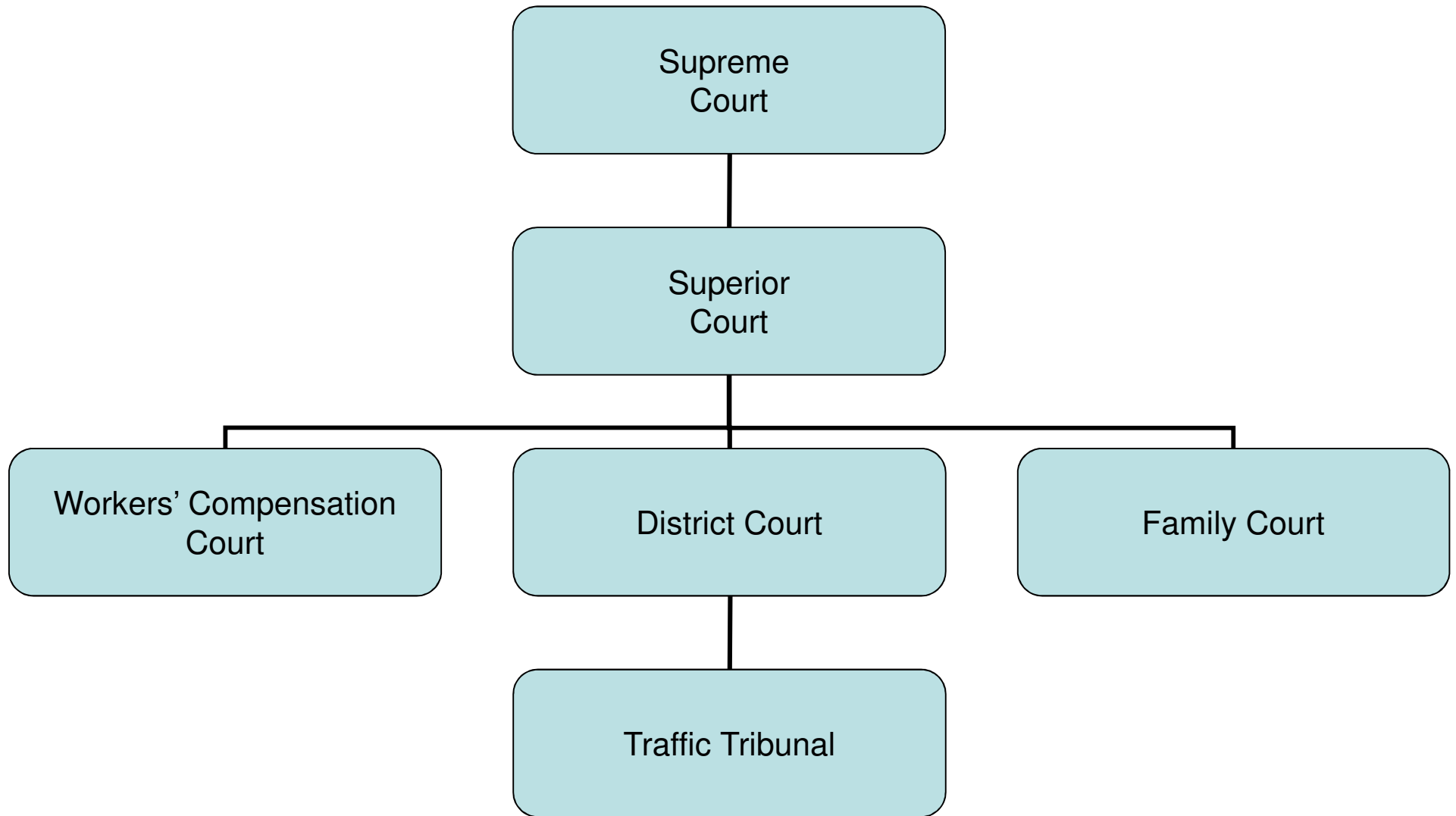
Budget

Judicial Department - Constitution

	FY 2014 Audited	FY 2015 Audited	FY 2016 Enacted	FY 2016 Revised	FY 2017 Recommend
Expenditures By Program					
Supreme Court	34,827,694	35,031,922	39,376,432	40,490,202	40,041,882
Superior Court	22,045,433	23,162,218	23,560,346	23,450,533	23,230,091
Family Court	22,352,346	23,229,664	23,932,580	23,467,317	23,816,324
District Court	12,163,405	12,452,031	13,002,213	12,189,593	12,337,603
Traffic Tribunal	8,326,527	8,430,828	8,542,221	8,399,966	9,018,180
Worker's Compensation Court	7,228,824	7,359,629	7,763,807	7,853,054	8,096,017
Judicial Tenure & Discipline	107,834	119,161	121,527	121,462	124,865
Total Expenditures	\$107,052,063	\$109,785,453	\$116,299,126	\$115,972,127	\$116,664,962
Expenditures By Object					
Personnel	80,944,971	83,844,051	86,597,074	85,373,887	86,066,740
Operating Supplies and Expenses	11,167,757	11,930,117	13,162,158	12,362,408	12,239,977
Assistance and Grants	10,652,587	10,897,786	10,467,007	10,782,783	11,101,919
Subtotal: Operating Expenditures	102,765,315	106,671,954	110,226,239	108,519,078	109,408,636
Capital Purchases and Equipment	4,286,748	3,113,499	6,072,887	7,453,049	7,256,326
Total Expenditures	\$107,052,063	\$109,785,453	\$116,299,126	\$115,972,127	\$116,664,962
Expenditures By Funds					
General Revenue	91,551,391	94,371,203	96,031,046	95,581,117	96,341,410
Federal Funds	2,986,862	3,142,537	3,431,136	3,392,087	3,116,365
Restricted Receipts	10,426,434	10,923,799	11,336,944	11,412,688	11,682,187
Operating Transfers from Other Funds	2,087,376	1,347,914	5,500,000	5,586,235	5,525,000
Total Expenditures	\$107,052,063	\$109,785,453	\$116,299,126	\$115,972,127	\$116,664,962
FTE Authorization	726.3	723.3	724.3	724.3	724.3

The Agency

Judicial Department



Personnel

Judicial Department - Constitution Agency Summary

	Grade	FY 2016		FY 2017	
		FTE	Cost	FTE	Cost
Classified		-	4,200	-	4,200
Unclassified		724.3	55,587,912	724.3	56,587,558
Subtotal		724.3	\$55,592,112	724.3	\$56,591,758
Overtime		-	700,402	-	384,952
Temporary and Seasonal		-	186,509	-	-
Turnover		-	(\$3,222,075)	-	(\$3,634,759)
Subtotal		-	(\$2,335,164)	-	(\$3,249,807)
Total Salaries		724.3	\$53,256,948	724.3	\$53,341,951
Benefits					
Payroll Accrual			299,870		303,458
FICA			3,436,260		3,456,745
Retiree Health			2,459,740		2,446,630
Health Benefits			7,848,211		8,331,503
Retirement			13,433,922		13,660,844
Workers Compensation			1,800		1,800
Subtotal			\$27,479,803		\$28,200,980
Total Salaries and Benefits		724.3	\$80,736,751	724.3	\$81,542,931
Cost Per FTE Position (Excluding Temporary and Seasonal)			\$111,211		\$112,582
Statewide Benefit Assessment			\$2,417,569		\$2,510,455
Payroll Costs		724.3	\$83,154,320	724.3	\$84,053,386
Purchased Services					
Training and Educational Services			112,900		30,000
Legal Services			416,285		416,285
Other Contracts			661,500		601,500
Information Technology			744,253		720,190
Clerical and Temporary Services			53,214		53,214
Design and Engineering Services			64,415		64,415
Management & Consultant Services			155,000		115,750
Medical Services			12,000		12,000
Subtotal			\$2,219,567		\$2,013,354
Total Personnel		724.3	\$85,373,887	724.3	\$86,066,740
Distribution By Source Of Funds					
General Revenue		654.8	\$74,605,187	652.8	\$75,093,878
Federal Funds		10.5	\$1,945,597	10.5	\$1,825,260
Restricted Receipts		59.0	\$8,823,103	61.0	\$9,147,602
Total All Funds		724.3	\$85,373,887	724.3	\$86,066,740

Performance Measures

Judicial Department - Constitution

Disposition Rate of Appeal Cases

During a specified time period, if the Supreme Court is able to dispose more cases than those docketed, the disposition rate will exceed 100 percent, thereby reducing the number of cases pending (backlog). The figures below represent the disposition rate of appeal cases. [Note: Calendar year 2015 data is as of 9/30/2015.]

	2013	2014	2015	2016	2017
Target	100%	100%	100%	100%	100%
Actual	109%	110%	111%	--	--

Performance for this measure is reported by calendar year.

Disposition Rate of Assigned Civil Cases

During a specified time period, if the Superior Court is able to dispose more assigned civil cases than those added to the trial calendar, the disposition rate will exceed 100 percent, thereby reducing the number of cases pending (backlog). The figures below represent the disposition rate of civil cases assigned to the trial calendar. [Note: Calendar year 2015 reports are unavailable due to case management system conversion.]

	2013	2014	2015	2016	2017
Target	100%	100%	100%	100%	100%
Actual	156%	152%	--	--	--

Performance for this measure is reported by calendar year.

Timeliness of Felony Cases Disposed

The figures below represent the percentage of felony cases disposed by the Superior Court within 180 days of arraignment. [Note: Calendar year 2015 data is as of 9/30/2015.]

	2013	2014	2015	2016	2017
Target	75%	75%	75%	75%	75%
Actual	62%	59%	59%	--	--

Performance for this measure is reported by calendar year.

Timeliness of Wayward/Delinquent Cases Suitable for Non-Judicial Processing Diversion

The Family Court has a Juvenile Services Unit that processes cases of juvenile, first-time offenders who have committed less serious offenses to be handled outside of court with no arraignment. The figures below represent the percentage of cases suitable for non-judicial processing that were diverted within 90 days of filing. [Note: Calendar year 2015 data is as of 9/30/2015.]

	2013	2014	2015	2016	2017
Target	80%	80%	80%	80%	80%
Actual	92%	52%	46%	--	--

Performance for this measure is reported by calendar year.

Performance Measures

Judicial Department - Constitution

Timeliness of Wayward/Delinquent Cases Requiring Court Involvement

The figures below represent the percentage of cases requiring Family Court involvement that are adjudicated within 180 days of filing. [Note: Calendar year 2015 data is as of 9/30/2015.]

	2013	2014	2015	2016	2017
Target	75%	75%	75%	75%	75%
Actual	52%	57%	54%	--	--

Performance for this measure is reported by calendar year.

Timeliness of Child Protection Cases Adjudicated

The figures below represent the percentage of child protection cases that are adjudicated by the Family Court within 180 days of filing. [Note: Calendar year 2015 data is as of 9/30/2015.]

	2013	2014	2015	2016	2017
Target	65%	65%	65%	65%	65%
Actual	44%	34%	32%	--	--

Performance for this measure is reported by calendar year.

Disposition Rate of Divorce Cases

During a specified time period, if the Family Court is able to dispose more cases than those filed, the disposition rate will exceed 100 percent, thereby reducing the number of cases pending (backlog). The figures below represent the disposition rate of divorce cases. [Note: Calendar year 2015 reports are unavailable due to case management system conversion.]

	2013	2014	2015	2016	2017
Target	100%	100%	100%	100%	100%
Actual	103%	97%	--	--	--

Performance for this measure is reported by calendar year.

Timeliness of Misdemeanor Cases Disposed

The figures below represent the percentage of misdemeanor cases disposed by the District Court within 60 days of filing. [Note: Calendar year 2015 data is as of 9/30/2015.]

	2013	2014	2015	2016	2017
Target	90%	90%	90%	90%	90%
Actual	73%	76%	73%	--	--

Performance for this measure is reported by calendar year.

Performance Measures

Judicial Department - Constitution

Timeliness of Summonses Disposed

The figures below represent the percentage of traffic summonses disposed by the Traffic Tribunal within 60 days. [Note: Calendar year 2015 reports are unavailable due to case management system conversion.]

	2013	2014	2015	2016	2017
Target	100%	100%	100%	100%	100%
Actual	96%	96%	--	--	--

Performance for this measure is reported by calendar year.

Timeliness of Cases Disposed at Pretrial

The figures below represent the percentage of Workers' Compensation Court cases disposed at pretrial within 90 days of filing. [Note: Calendar year 2015 data is as of 9/30/2015.]

	2013	2014	2015	2016	2017
Target	90%	90%	90%	90%	90%
Actual	87%	86%	84%	--	--

Performance for this measure is reported by calendar year.

Timeliness of Cases Disposed at Trial

The figures below represent the percentage of Workers' Compensation Court cases disposed at trial within 360 days of filing. [Note: Calendar year 2015 data is as of 9/30/2015.]

	2013	2014	2015	2016	2017
Target	90%	90%	90%	90%	90%
Actual	86%	88%	79%	--	--

Performance for this measure is reported by calendar year.

Timeliness of Verified Complaints Disposed

The figures below represent the percentage of Judicial Tenure and Discipline cases closed during a fiscal year that were disposed within 90 days of docketing. Performance data include both cases filed through the end of a fiscal year and cases that were pending at the beginning of the fiscal year.

	2013	2014	2015	2016	2017
Target	100%	100%	100%	100%	100%
Actual	73%	86%	69%	--	--

Performance for this measure is reported by state fiscal year.

The Program

Judicial Department - Constitution Supreme Court

Program Mission

Provide timely review of all decisions appealed from the lower courts. Provide overall administrative direction to the unified court system.

Regulate the admission, registration, and discipline of attorneys to the Rhode Island Bar.

Program Description

The Supreme Court Program includes the budget for the Court as well as the Administrative Office of State Courts, and the State Law Library.

The Court portion of the budget covers the justices, their secretarial and legal staff, the law clerk department, and the Supreme Court Clerk's Office. Through this portion of the budget the Supreme Court fulfills its role as the court of last resort. The Court also renders advisory opinions to the legislative and executive branches of government; issues writs of habeas corpus, mandamus, certiorari and certain other prerogative writs; and regulates the admission, registration and discipline of members of the Rhode Island Bar.

Administrative services include all budgetary, personnel and purchasing functions; technology services; facilities and operations, which includes the maintenance of courthouse and judicial buildings as well as security; programming for judicial education; the collection of court-ordered restitution, fines, fees and costs; judicial records center; and research and statistical analysis.

The State Law Library is the only complete, public legal reference service in Rhode Island, and it operates under the Supreme Court. The Library has over 110,000 volumes and also provides access to computer aided legal research.

Other major activities of the Supreme Court include domestic violence training and monitoring, mandatory continuing legal education, appellate screening, alternative dispute resolution, disciplinary counsel, community outreach and public relations, and the interpreter program.

Statutory History

The Supreme Court is the only constitutionally established court and is identified in Article X of the Rhode Island State Constitution. The organization, jurisdiction and powers of the Supreme Court are described in Title 8 Chapter 1 of the Rhode Island General Laws, and the administrative authority of the court is established by Title 8 Chapter 15. Other statutes relating to the Supreme Court include Title 8 Chapters 3 through 7 of the Rhode Island General Laws

The Budget

Judicial Department - Constitution Supreme Court

	2014 Audited	2015 Audited	2016 Enacted	2016 Revised	2017 Recommend
Expenditures By Subprogram					
Supreme Court Operations	31,216,042	31,175,820	35,834,192	36,947,962	36,257,476
Defense of Indigents	3,611,652	3,856,102	3,542,240	3,542,240	3,784,406
Total Expenditures	\$34,827,694	\$35,031,922	\$39,376,432	\$40,490,202	\$40,041,882
Expenditures By Object					
Personnel	19,658,688	19,890,052	20,276,847	21,302,534	20,610,191
Operating Supplies and Expenses	6,799,613	7,496,111	8,704,725	7,803,566	7,901,658
Assistance and Grants	4,629,281	4,898,171	4,543,615	4,547,615	4,791,781
Subtotal: Operating Expenditures	31,087,582	32,284,334	33,525,187	33,653,715	33,303,630
Capital Purchases and Equipment	3,740,112	2,747,588	5,851,245	6,836,487	6,738,252
Total Expenditures	\$34,827,694	\$35,031,922	\$39,376,432	\$40,490,202	\$40,041,882
Expenditures By Funds					
General Revenue	29,756,749	30,679,845	30,649,257	31,673,036	31,311,565
Federal Funds	168,518	115,873	123,289	126,931	128,933
Restricted Receipts	2,815,051	2,888,290	3,103,886	3,104,000	3,076,384
Operating Transfers from Other Funds	2,087,376	1,347,914	5,500,000	5,586,235	5,525,000
Total Expenditures	\$34,827,694	\$35,031,922	\$39,376,432	\$40,490,202	\$40,041,882

Personnel

Judicial Department - Constitution Supreme Court

	Grade	FY 2016		FY 2017	
		FTE	Cost	FTE	Cost
Unclassified					
CHIEF JUSTICE (SUPREME COURT)	08809F	1.0	230,925	1.0	232,150
ASSOCIATE JUSTICE	08808F	4.0	787,238	4.0	798,804
STATE COURT ADMINISTRATOR	08848A	1.0	174,307	1.0	175,232
CHIEF DISCIPLINARY COUNSEL	08844A	1.0	151,537	1.0	152,342
EXECUTIVE ASSISTANT FOR POLICY AND	08843A	1.0	147,670	1.0	148,444
EXECUTIVE DIRECTOR (JUDICIAL)	08844A	1.0	146,494	1.0	149,032
DIRECTOR OF FINANCE/ASSOCIATE	08844A	1.0	146,065	1.0	148,598
DEPUTY ADMINISTRATOR (STATE COURTS)	08845A	1.0	144,121	1.0	146,625
CHIEF SUPERVISORY CLERK	08842A	2.0	268,623	2.0	271,599
DEPUTY EXECUTIVE	08841A	1.0	131,656	1.0	133,943
CLERK PRO-TEMPORE	08841A	1.0	117,650	1.0	119,694
DEPUTY DISCIPLINARY COUNSEL	08837A	1.0	111,191	1.0	113,100
ASSISTANT ADMINISTRATOR/POLICY & PROGRAMS	04437A	1.0	111,103	1.0	111,682
ASSISTANT ADMINISTRATOR/POLICY & PROGRAMS	08837A	1.0	109,567	1.0	111,457
CHIEF STAFF ATTORNEY	08835A	1.0	107,217	1.0	107,771
DIRECTOR OF CONSUMER	08835A	1.0	104,369	1.0	106,171
PUBLIC INFORMATION OFFICER	04435A	1.0	103,339	1.0	105,114
ASSISTANT DIRECTOR POLICY OFFICE	08839A	8.0	826,587	8.0	846,106
PRINCIPAL COURT FUNCTIONAL SPECIALIST	04436A	1.0	102,798	1.0	104,574
LAW LIBRARIAN	08836A	1.0	102,230	1.0	107,265
STAFF ATTORNEY IV	00834A	1.0	99,816	1.0	101,533
SOFTWARE SUPPORT SPECIALIST	04433A	4.0	378,940	4.0	384,315
ASSISTANT DISCIPLINARY COUNSEL	08831A	2.0	179,359	2.0	182,461
SENIOR DEVELOPER (JUDICIAL)	08835A	1.0	86,985	1.0	88,496
EXECUTIVE DIRECTOR/EXECUTIVE	08831A	1.0	85,828	1.0	87,302
ADMINISTRATIVE CLERK	08829A	1.0	85,481	1.0	86,946
ASSISTANT ADMINISTRATOR/MANAGEMENT AND	08834A	1.0	83,987	1.0	85,445
PROJECT MANAGER	04430A	5.0	417,685	5.0	422,830
PRINCIPAL SUPERVISORY CLERK	08830A	2.0	164,405	2.0	167,260
ADMINISTRATIVE ASSISTANT	04429A	3.0	242,181	3.0	244,419
SPECIAL ASSISTANT	08829A	2.0	161,143	2.0	162,915
CONFIDENTIAL INVESTIGATOR	08831A	1.0	78,927	1.0	80,298
PROJECT MANAGER (JUDICIAL)	04430A	1.0	77,733	1.0	82,311
STAFF ATTORNEY II	08830A	2.0	154,925	2.0	159,036
STAFF ATTORNEY	08829A	4.7	362,653	4.7	367,947
SENIOR FISCAL OFFICER (JUDICIAL)	04432A	1.0	74,717	1.0	78,981
ADMINISTRATIVE CLERK OF OFFICE SERVICES	04427A	1.0	74,600	1.0	74,996
PROJECT MANAGER (JUDICIAL)	08830A	2.0	148,145	2.0	150,718
COORDINATOR, SPECIAL PROJECTS	08827A	6.0	426,081	6.0	432,524
PRINCIPAL ASSISTANT ADMINISTRATOR	08825A	1.0	69,788	1.0	71,000
SPECIAL ASSISTANT (JUDICIAL)	08829A	1.0	69,550	1.0	70,758
BAR ADMINISTRATOR (JUDICIAL)	08829A	1.0	69,414	1.0	69,919
PRINCIPAL ADMINISTRATIVE CLERK	04425A	2.0	132,169	2.0	134,454
PRINCIPAL DEPUTY CLERK (SYSTEMS)	08825A	1.0	65,333	1.0	66,468
OFFICE MANAGER	04424A	3.0	187,754	3.0	190,222

Personnel

Judicial Department - Constitution Supreme Court

	Grade	FY 2016		FY 2017	
		FTE	Cost	FTE	Cost
PRINCIPAL ASSISTANT ADMINISTRATOR	08825A	2.0	124,726	2.0	126,892
STAFF ATTORNEY I	08828A	1.0	61,751	1.0	64,579
SENIOR MONITORING AND EVALUATION	08825A	2.0	121,757	2.0	123,872
OFFICE MANAGER (JUDICIAL)	08824A	1.0	59,828	1.0	60,867
ASSISTANT BUILDING & GROUNDS OFFICER	00322A	4.0	235,130	4.0	238,613
EXECUTIVE SECRETARY	04423A	1.0	57,848	1.0	58,854
SENIOR MANAGEMENT ANALYST (JUDICIAL)	04423A	2.0	115,676	2.0	117,672
SENIOR MANAGEMENT ANALYST	04423A	4.7	267,128	4.7	271,241
ASSISTANT SUPERVISING CLERK	04422A	2.0	113,242	2.0	114,443
LAW CLERK (JUDICIARY)	08823A	15.0	826,725	15.0	841,071
CHAMBER LAW CLERK (JUDICIAL)	08823A	11.0	602,250	11.0	612,700
LAW CLERK (JUDICIARY)	00823A	1.0	54,750	1.0	55,700
MONITORING & EVALUATION SPECIALIST	00823A	1.0	54,750	1.0	55,700
PRINCIPAL ASSISTANT ADMINISTRATOR	04425A	1.0	54,715	1.0	57,013
ADMINISTRATIVE ASSISTANT	08822A	4.0	218,804	4.0	222,605
DEPUTY LAW LIBRARIAN	04426A	1.0	52,590	1.0	52,869
MONITORING & REVALUATION SPECIALIST (JUD)	08823A	1.0	52,489	1.0	54,471
ADMINISTRATIVE ASSISTANT II (JUDICIAL)	08820A	1.0	51,243	1.0	52,133
ADMINISTRATIVE AIDE	04416A	1.0	50,440	1.0	51,302
MONITORING & EVALUATION SPECIALIST	08823A	2.0	99,919	2.0	103,690
RECORDS CUSTODIAN-DOCUMENTS DIST.(STATE	04418A	3.0	149,305	3.0	151,237
ADMINISTRATIVE ASSISTANT II	08815A	1.0	49,648	1.0	50,506
DEPUTY CLERK	04420A	5.0	246,716	5.0	252,031
SENIOR ADMINISTRATIVE AIDE	04421A	0.6	29,181	0.6	29,691
CONFIDENTIAL SECRETARY	08817A	1.0	48,518	1.0	49,360
FACILITIES AND OPERATIONS OFFICER	00320A	2.0	95,727	2.0	98,053
RECORDS CUSTODIAN DOCUMENTS DISTRIBUTION	04418A	1.0	47,680	1.0	48,508
SECOND ASSISTANT LAW LIBRARIAN	04411A	0.7	33,298	0.7	33,841
ADMINISTRATIVE ASSISTANT II	04415A	2.0	91,419	2.0	92,997
ADMINISTRATIVE AIDE	08810A	0.6	21,079	0.6	21,447
JANITOR (JUDICIAL)	00307A	1.0	33,977	1.0	34,184
PRINCIPAL CLERK TYPIST	04410A	1.0	31,974	1.0	32,143
CLERICAL	00288H	-	36,581	-	36,775
INFORMATION SYSTEMS SPECIALIST	08816A	-	80,066	-	82,199
SEASONAL EDITOR III (JUDICIAL)	10287H	-	18,000	-	18,000
SEASONAL LABORER (JUDICIAL)	00420H	-	31,656	-	31,824
SEASONAL LABORER (JUDICIAL)	00420H	-	30,219	-	30,596
Subtotal		159.3	\$12,453,091	159.3	\$12,662,936

Personnel

Judicial Department - Constitution Supreme Court

	Grade	FY 2016		FY 2017	
		FTE	Cost	FTE	Cost
Overtime		-	392,250	-	268,800
Temporary and Seasonal		-	186,509	-	-
Turnover		-	-	-	(554,240)
Subtotal		-	\$578,759	-	(\$285,440)
Total Salaries		159.3	\$13,031,850	159.3	\$12,377,496
Benefits					
Payroll Accrual			71,728		70,066
FICA			928,838		889,147
Retiree Health			688,197		656,762
Health Benefits			1,848,750		1,873,876
Retirement			3,172,601		3,176,408
Subtotal			\$6,710,114		\$6,666,259
Total Salaries and Benefits		159.3	\$19,741,964	159.3	\$19,043,755
Cost Per FTE Position (Excluding Temporary and Seasonal)			\$122,771		\$119,558
Statewide Benefit Assessment			\$581,924		\$575,040
Payroll Costs		159.3	\$20,323,888	159.3	\$19,618,795
Purchased Services					
Information Technology			675,440		688,190
Clerical and Temporary Services			3,781		3,781
Management & Consultant Services			7,000		7,000
Legal Services			87,185		87,185
Other Contracts			133,000		133,000
Training and Educational Services			30,000		30,000
Design and Engineering Services			42,240		42,240
Subtotal			\$978,646		\$991,396
Total Personnel		159.3	\$21,302,534	159.3	\$20,610,191
Distribution By Source Of Funds					
General Revenue		149.6	\$19,271,931	149.6	\$18,541,225
Federal Funds		0.7	\$126,869	0.7	\$128,848
Restricted Receipts		9.0	\$1,903,734	9.0	\$1,940,118
Total All Funds		159.3	\$21,302,534	159.3	\$20,610,191

The Program

Judicial Department - Constitution Superior Court

Program Mission

Provide timely and fair adjudication of all cases within the jurisdiction of the Superior Court. Maintain a complete and accurate record for all cases that are filed with the Superior Court. Provide a written transcript of any proceeding or appeal.

Program Description

The program budget for Superior Court includes the operation of the Court itself, administrative services, and the operation of the clerks' offices.

Superior Court has four locations: Providence/Bristol, Kent, Washington, and Newport Counties. It has jurisdiction over all felony cases and misdemeanor cases which have been appealed or waived from the District Court. The Court also hears all civil cases where the amount at issue exceeds \$10,000, equity cases wherein injunctive relief is sought, civil cases that are appealed from the District Court, and all probate and zoning appeals. The Superior Court has concurrent original jurisdiction with the District Court in all other actions at law in which the amount in controversy exceeds \$5,000 yet does not exceed \$10,000. The administrative office of the Court handles all case scheduling, supervises the court secretaries and stenographers, and provides other administrative services.

Each Court location has a clerk's office which is responsible for maintaining the records of the court. This includes creating files for each case, filing all papers that are received, updating the record in each case to reflect court proceedings and the papers that have been filed, and maintaining and marking all exhibits of evidence.

Other major programs include jury selection, court-annexed arbitration, court ordered restitution, and administration of jurors' fees and expenses. In FY 1995, a Gun Court was established to adjudicate offenses where guns are involved and the planning process began for the Adult Drug Court. In FY 2002, the Adult Drug Court was established preceded by the FY 2001 establishment of the Business Calendar.

Statutory History

The Superior Court is a statutorily authorized court. The jurisdiction and sessions of the court, and the role and responsibilities of the clerks, secretaries and stenographers of the court are outlined in Title 8 Chapters 2 through 7 of the Rhode Island General Laws.

The Budget

Judicial Department - Constitution Superior Court

	2014 Audited	2015 Audited	2016 Enacted	2016 Revised	2017 Recommend
Expenditures By Subprogram					
Superior Court Operations	20,457,106	21,537,490	21,848,893	21,636,932	21,376,358
Jury Operations	1,588,327	1,624,728	1,711,453	1,813,601	1,853,733
Total Expenditures	\$22,045,433	\$23,162,218	\$23,560,346	\$23,450,533	\$23,230,091
Expenditures By Object					
Personnel	18,254,022	19,235,455	19,693,523	19,308,494	19,228,868
Operating Supplies and Expenses	1,300,798	1,375,299	1,301,863	1,386,535	1,309,994
Assistance and Grants	2,460,863	2,458,648	2,489,902	2,555,149	2,489,902
Subtotal: Operating Expenditures	22,015,683	23,069,402	23,485,288	23,250,178	23,028,764
Capital Purchases and Equipment	29,750	92,816	75,058	200,355	201,327
Total Expenditures	\$22,045,433	\$23,162,218	\$23,560,346	\$23,450,533	\$23,230,091
Expenditures By Funds					
General Revenue	21,736,162	22,693,335	23,209,940	23,032,247	22,807,060
Federal Funds	104,171	92,432	50,406	118,286	51,290
Restricted Receipts	205,100	376,451	300,000	300,000	371,741
Total Expenditures	\$22,045,433	\$23,162,218	\$23,560,346	\$23,450,533	\$23,230,091

Personnel

Judicial Department - Constitution Superior Court

	Grade	FY 2016		FY 2017	
		FTE	Cost	FTE	Cost
Unclassified					
PRESIDING JUSTICE (SUPERIOR COURT)	08807F	1.0	207,905	1.0	209,009
ASSOCIATE JUSTICE	08805F	21.0	3,673,780	21.0	3,760,176
SPECIAL MAGISTRATE	08803F	1.0	173,520	1.0	177,930
ADMINISTRATIVE CLERK	08846A	1.0	162,922	1.0	163,787
GENERAL MAGISTRATE	08803F	1.0	162,444	1.0	166,572
MAGISTRATE	08803F	3.0	474,214	3.0	479,848
CLERK (PROVIDENCE COUNTY)	08839A	1.0	126,917	1.0	127,571
ADMINISTRATOR, ARBITRATION PROGRAM	08839A	1.0	102,603	1.0	104,346
GENERAL CHIEF CLERK	08835A	1.0	95,683	1.0	97,345
CLERK (NEWPORT COUNTY)	08832A	1.0	93,694	1.0	94,192
JURY COMMISSIONER	08837A	1.0	93,081	1.0	93,575
DEPUTY ADMINISTRATOR/CLERK	08834A	1.0	92,385	1.0	93,991
CONFIDENTIAL INVESTIGATOR	08831A	1.0	88,323	1.0	89,858
CLERK (WASHINGTON COUNTY)	08832A	1.0	85,887	1.0	87,379
ASSISTANT ADMINISTRATOR/MANAGEMENT AND CLERK (KENT COUNTY)	08834A	1.0	83,987	1.0	85,445
ADMINISTRATIVE CLERK	08829A	2.0	165,463	2.0	168,318
SPECIAL ASSISTANT (JUDICIAL)	08829A	1.0	81,721	1.0	83,141
ASSOCIATE JURY COMMISSIONER	08833A	1.0	80,655	1.0	85,473
PROJECT MANAGER	08830A	2.0	156,688	2.0	158,884
PROJECT MANAGER (JUDICIAL)	08830A	0.7	48,497	0.7	48,675
SUPERVISING CLERK	08826A	2.0	144,377	2.0	146,883
PROJECT COORDINATOR	04426A	1.0	72,182	1.0	72,562
COURT REPORTER	00127A	27.7	1,955,785	27.7	1,987,066
ASST INTAKE SUPERVISOR (SUPERI	08828A	1.0	70,186	1.0	71,406
SUPERVISING CLERK	04426A	1.0	70,093	1.0	71,311
PRINCIPAL ASSISTANT ADMINISTRATOR	04425A	1.0	69,273	1.0	69,637
DEPUTY CLERK I	04424A	2.0	133,524	2.0	135,818
MANAGER OF CALENDAR SERVICES (PROVIDENCE)	04424A	1.0	65,782	1.0	66,132
ASSISTANT MANAGER OF CALENDAR SERVICES	04423A	1.0	64,360	1.0	64,695
COURT REPORTER	10127A	1.0	64,327	1.0	65,444
SENIOR MANAGEMENT ANALYST	04423A	0.3	20,154	0.3	20,259
ASSISTANT MANAGER OF CALENDAR SERVICES	04423A	1.0	61,793	1.0	62,866
ASSISTANT SUPERVISING CLERK	04422A	2.0	122,584	2.0	124,693
COORDINATOR, SPECIAL PROJECTS	08827A	1.0	61,047	1.0	64,668
SENIOR ADMINISTRATIVE AIDE	04421A	1.0	58,525	1.0	59,534
PRODUCTION SYSTEMS SPECIALIST	04420A	1.0	56,662	1.0	57,636
ASSISTANT ADMINISTRATIVE OFFICER	08821A	1.0	55,874	1.0	56,845
MANAGER OF CALENDAR SERVICES (OUT	04424A	1.0	55,196	1.0	57,865
LAW CLERK (JUDICIARY)	08823A	1.0	54,750	1.0	55,700
COURT SECRETARY/JUDICIAL, SUPERIOR COURT	08823A	1.0	54,652	1.0	55,040
MONITORING & REVALUATION SPECIALIST (JUD)	08823A	2.0	107,655	2.0	110,556
DEPUTY CLERK	04420A	4.0	211,403	4.0	215,068
DEPUTY CLERK (SUPERIOR COURT)	04420A	22.0	1,106,247	22.0	1,128,897
ASSISTANT COURT SECRETARY/JUDICIAL	08821A	3.0	146,749	3.0	148,783

Personnel

Judicial Department - Constitution Superior Court

	Grade	FY 2016		FY 2017	
		FTE	Cost	FTE	Cost
CONFIDENTIAL SECRETARY	08817A	1.0	48,518	1.0	49,360
ADMINISTRATIVE AIDE	04416A	1.0	47,461	1.0	48,282
ELECTRONIC COURT REPORTER	04419A	1.0	47,060	1.0	47,877
POLICY AIDE	04418A	4.0	182,911	4.0	184,971
ELECTRONIC COURT REPORTER	00119A	2.0	91,023	2.0	93,689
SENIOR ADMINISTRATIVE AIDE	04417A	1.0	44,045	1.0	44,810
ADMINISTRATIVE ASSISTANT II	08815A	1.0	43,565	1.0	44,322
ASSISTANT CLERK (SUPERIOR COURT)	04418A	8.0	335,375	8.0	345,451
ADMINISTRATIVE AIDE	04415A	1.0	39,331	1.0	40,013
ADMINISTRATIVE ASSISTANT	08814A	1.0	38,336	1.0	39,258
GENERAL OPERATIONS ASSISTANT	04414A	9.0	328,327	9.0	336,752
DATA ENTRY AIDE (JUDICIAL)	04410A	1.0	33,506	1.0	34,450
RECORDS CLERK/DATA ENTRY AIDE	04410A	10.0	328,863	10.0	335,292
Subtotal		165.7	\$12,825,857	165.7	\$13,074,851
Overtime		-	168,950	-	46,950
Turnover		-	(810,472)	-	(988,991)
Subtotal		-	(\$641,522)	-	(\$942,041)
Total Salaries		165.7	\$12,184,335	165.7	\$12,132,810
Benefits					
Payroll Accrual			68,975		69,082
FICA			704,328		695,030
Retiree Health			487,936		492,091
Health Benefits			1,680,890		1,747,090
Retirement			3,184,489		3,134,634
Subtotal			\$6,126,618		\$6,137,927
Total Salaries and Benefits		165.7	\$18,310,953	165.7	\$18,270,737
Cost Per FTE Position (Excluding Temporary and Seasonal)			\$110,516		\$110,273
Statewide Benefit Assessment			\$552,741		\$573,331
Payroll Costs		165.7	\$18,863,694	165.7	\$18,844,068

Personnel

Judicial Department - Constitution Superior Court

	Grade	FY 2016		FY 2017	
		FTE	Cost	FTE	Cost
Purchased Services					
Clerical and Temporary Services			42,000		42,000
Legal Services			308,800		308,800
Other Contracts			77,000		17,000
Design and Engineering Services			5,000		5,000
Medical Services			12,000		12,000
Subtotal			\$444,800		\$384,800
Total Personnel		165.7	\$19,308,494	165.7	\$19,228,868
Distribution By Source Of Funds					
General Revenue		165.4	\$18,973,547	164.4	\$18,821,393
Federal Funds		0.3	\$34,947	0.3	\$35,734
Restricted Receipts		-	\$300,000	1.0	\$371,741
Total All Funds		165.7	\$19,308,494	165.7	\$19,228,868

The Program

Judicial Department - Constitution Family Court

Program Mission

Adjudicate the cases within the jurisdiction of the Family Court in a timely and fair manner.

Provide assistance to families involved in litigation before the court.

Program Description

The program budget for Family Court includes the operation of the Court itself, the administrative office of the Court, the clerks' offices, and the operation of several ancillary programs, including juvenile intake services, the Family Services Unit, the Collections Unit and the Court Appointed Special Advocate Unit.

The Family Court handles all criminal cases involving juveniles; juvenile status offenses, such as truancy and disobedience; all cases where parents have been charged with neglect, abandonment or abuse of their children; and other miscellaneous cases involving children, such as child marriages and paternity issues. The Court also hears all divorces and issues stemming from a divorce, such as orders for child support and temporary allowances.

The Court has offices in Providence, Kent, Newport and Washington Counties. There are clerks' offices in each of these locations, and the office staff is responsible for preparing all court calendars and maintaining records of the Court. All papers are filed with the clerk's office, and this office sets up a file for each case and maintains an up-to-date record of court proceedings and the papers that have been filed.

Because of the special nature of the Family Court, it provides a variety of services to families. For example, the Family Services Unit provides alcohol and drug screens and supervises visitation, in addition to providing investigative services to the court. The Child Support Collections Unit handles the collection and disbursement of child support payments. Specialty courts include the Juvenile Drug Court, the Family Treatment Drug Court, the Domestic Violence Court, the Truancy Court, and the Mental Health Court Clinic.

Statutory History

The Family Court is authorized by statute. The composition and jurisdiction of the Family Court is identified in Title 8 Chapter 10 of the Rhode Island General Laws.

The Budget

Judicial Department - Constitution Family Court

	2014 Audited	2015 Audited	2016 Enacted	2016 Revised	2017 Recommend
Expenditures By Subprogram					
Operations	22,352,346	23,229,664	23,932,580	23,467,317	23,816,324
Total Expenditures	\$22,352,346	\$23,229,664	\$23,932,580	\$23,467,317	\$23,816,324
Expenditures By Object					
Personnel	19,581,798	20,311,441	21,115,881	20,399,911	20,717,428
Operating Supplies and Expenses	1,608,601	1,725,119	1,638,250	1,627,191	1,563,466
Assistance and Grants	1,114,613	1,088,724	1,084,531	1,230,066	1,355,980
Subtotal: Operating Expenditures	22,305,012	23,125,284	23,838,662	23,257,168	23,636,874
Capital Purchases and Equipment	47,334	104,380	93,918	210,149	179,450
Total Expenditures	\$22,352,346	\$23,229,664	\$23,932,580	\$23,467,317	\$23,816,324
Expenditures By Funds					
General Revenue	19,638,173	20,408,254	20,918,555	20,493,102	21,045,610
Federal Funds	2,714,173	2,821,410	3,014,025	2,974,215	2,770,714
Total Expenditures	\$22,352,346	\$23,229,664	\$23,932,580	\$23,467,317	\$23,816,324

Personnel

Judicial Department - Constitution Family Court

	Grade	FY 2016		FY 2017	
		FTE	Cost	FTE	Cost
Unclassified					
CHIEF JUDGE, FAMILY COURT	08807F	1.0	207,905	1.0	209,009
ASSOCIATE JUSTICE	08805F	11.0	1,924,497	11.0	1,954,963
MAGISTRATE	08803F	8.0	1,307,000	8.0	1,340,150
MAGISTRATE OF THE FAMILY COURT	08803F	1.0	162,444	1.0	166,572
ADMINISTRATIVE CLERK	08846A	1.0	162,212	1.0	165,015
ADMINISTRATOR/DIRECTOR (CASA)(JUDICIAL)	08843A	1.0	142,811	1.0	145,291
ADMINISTRATOR - CLERK (FAMILY COURT)	08843A	1.0	141,002	1.0	143,444
DEPUTY EXECUTIVE	08841A	1.0	132,215	1.0	134,508
DIRECTOR OF INTERGOVERNMENTAL RELATIONS	08840A	1.0	128,767	1.0	129,450
SENIOR POLICY ASSOCIATE	08838A	1.0	118,141	1.0	118,764
DEPUTY ADMINISTRATIVE CLERK (JUDICIAL)	08834A	1.0	104,624	1.0	105,159
DEPUTY ADMINISTRATOR/CLERK	08834A	2.0	204,408	2.0	205,855
STAFF ATTORNEY V	08836A	1.0	98,976	1.0	100,695
STAFF ATTORNEY V (JUDICIAL)	08836A	4.0	394,981	4.0	404,959
DEPUTY DIRECTOR-COMMUNITY AFFAIRS	08834A	2.0	195,358	2.0	198,739
ADMINISTRATIVE MANAGER	08834A	1.0	96,283	1.0	97,934
EXECUTIVE DIRECTOR/EXECUTIVE	08831A	1.0	90,203	1.0	90,681
EXECUTIVE DIRECTOR	08836A	1.0	89,502	1.0	89,977
PRINCIPAL SUPERVISORY CLERK	08830A	1.0	87,262	1.0	88,766
STAFF ATTORNEY III	08832A	9.0	750,554	9.0	766,336
PROJECT MANAGER (JUDICIAL)	08830A	1.3	107,080	1.3	108,524
EXECUTIVE DIRECTOR/EXECUTIVE	08831A	1.0	78,927	1.0	80,298
PRINCIPAL PLANNING AND PROGRAM SPECIALIST	05728A	2.0	152,910	2.0	155,562
SR MANAGER-CALENDAR SERVICES (JUD)	0J328A	1.0	72,349	1.0	75,256
COURT REPORTER	00127A	14.0	1,009,754	14.0	1,025,266
ASSISTANT INTAKE SUPERVISOR (FAMILY COURT)	08828A	6.0	430,452	6.0	436,204
ASSOCIATE EXECUTIVE ASSISTANT	08826A	1.0	67,977	1.0	69,016
COORDINATOR SPECIAL PROJECTS (JUCICIAL)	08827A	1.0	67,543	1.0	68,716
CASA COORDINATOR	05722A	1.0	63,268	1.0	63,604
SUPERVISING DEPUTY CLERK (FAMILY COURT)	0J322A	6.0	371,631	6.0	376,501
SOCIAL CASEWORKER II (JUDICIAL)	05724A	8.0	473,807	8.0	482,455
PRINCIPAL PLANNING & PROGRAM SPECIALIST	05728A	1.0	59,107	1.0	59,421
VOLUNTEER COORDINATOR	0J322A	1.0	57,796	1.0	58,800
ADMINISTRATIVE ASSISTANT	0J320A	1.0	56,123	1.0	57,098
ADMINISTRATIVE COORDINATOR	0J320A	1.0	56,123	1.0	57,098
EXECUTIVE SECRETARY	08823A	2.0	112,237	2.0	114,186
DEPUTY CLERK	0J320A	19.0	1,024,124	19.0	1,044,555
ADMINISTRATIVE ASSISTANT (JUDICIAL)	0J320A	1.0	53,040	1.0	55,223
DEPUTY CLERK	00120A	2.0	104,926	2.0	106,748
MEDIATION COUNSELOR	0J320A	5.0	261,394	5.0	265,663
SENIOR ADMINISTRATIVE AIDE	0J317A	2.0	102,241	2.0	103,364
DEPUTY CLERK (JUDICIAL)	0J320A	3.0	152,233	3.0	157,616
ELECTRONIC COURT REPORTER	00119A	8.5	428,875	8.5	436,306
SOCIAL CASEWORKER (JUDICIAL)	0J322A	2.0	99,606	2.0	102,257
DOMESTIC VIOLENCE LIAISON	00818A	1.0	44,614	1.0	45,388

Personnel

Judicial Department - Constitution Family Court

	Grade	FY 2016		FY 2017	
		FTE	Cost	FTE	Cost
ELECTRONIC COURT REPORTER	10119A	1.0	44,378	1.0	45,144
SENIOR DATA ENTRY OPERATOR	0J312A	12.0	512,806	12.0	520,447
ADMINISTRATIVE ASSISTANT	0J315A	2.0	85,154	2.0	86,195
ADMINISTRATIVE ASSISTANT (JUDICIAL)	08814A	1.0	42,426	1.0	43,163
ADMINISTRATIVE ASSISTANT II	08815A	0.6	23,870	0.6	24,628
CLERK TYPIST	0J305A	1.0	38,619	1.0	39,290
CLERK SECRETARY	0J314A	1.0	36,402	1.0	36,596
DATA ENTRY AIDE (JUDICIAL)	0J310A	7.0	244,744	7.0	248,210
DATA ENTRY AIDE	0J310A	6.0	206,124	6.0	209,876
SENIOR DATA ENTRY OPERATOR	08812A	0.6	20,461	0.6	20,570
FISCAL CLERK	0J310A	1.0	33,464	1.0	33,642
ADMINISTRATIVE ASSISTANT (JUDICIAL)	00420H	-	44,151	-	44,324
DATA ENTRY SEASONAL (JUDICIAL)	00273H	-	31,656	-	31,824
SEASONAL CASA VOLUNTEER COORD (JUD)	00284H	-	35,085	-	35,272
SEASONAL COURT LIAISON (JUDICI	00419H	-	73,864	-	74,256
SEASONAL LABORER (JUDICIAL)	00420H	-	27,788	-	27,846
SEASONAL OPERATIONS CLERK	00273H	-	33,048	-	33,154
SEASONAL PROGRAM COORD(JUDICIA	00421H	-	84,944	-	85,394
SEASONAL SUPERVISING COORD(JUD	00417H	-	62,784	-	63,118
Subtotal		175.0	\$13,729,050	175.0	\$13,964,341
Overtime		-	37,302	-	37,302
Turnover		-	(887,505)	-	(963,291)
Subtotal		-	(\$850,203)	-	(\$925,989)
Total Salaries		175.0	\$12,878,847	175.0	\$13,038,352
Benefits					
Payroll Accrual			72,761		73,842
FICA			845,152		859,779
Retiree Health			613,209		620,313
Health Benefits			1,887,335		2,063,690
Retirement			3,088,013		3,180,619
Workers Compensation			1,800		1,800
Subtotal			\$6,508,270		\$6,800,043
Total Salaries and Benefits		175.0	\$19,387,117	175.0	\$19,838,395
Cost Per FTE Position (Excluding Temporary and Seasonal)			\$110,765		\$113,343
Statewide Benefit Assessment			\$590,881		\$616,083
Payroll Costs		175.0	\$19,977,998	175.0	\$20,454,478

Personnel

Judicial Department - Constitution Family Court

	Grade	FY 2016		FY 2017	
		FTE	Cost	FTE	Cost
Purchased Services					
Information Technology			36,813		-
Clerical and Temporary Services			7,200		7,200
Management & Consultant Services			148,000		108,750
Other Contracts			130,000		130,000
Training and Educational Services			82,900		-
Design and Engineering Services			17,000		17,000
Subtotal			\$421,913		\$262,950
Total Personnel		175.0	\$20,399,911	175.0	\$20,717,428
Distribution By Source Of Funds					
General Revenue		165.5	\$18,616,130	165.5	\$19,056,750
Federal Funds		9.5	\$1,783,781	9.5	\$1,660,678
Total All Funds		175.0	\$20,399,911	175.0	\$20,717,428

The Program

Judicial Department - Constitution District Court

Program Mission

Adjudicate the cases within the jurisdiction of the District Court in a timely and fair manner.

Maintain a complete and accurate record for every case.

Program Description

The District Court consists of a chief judge, an administrative judge and associate judges. The court is also served by two magistrates. The program budget for the District Court includes the cost of operation for the Court itself and the operation of the clerk's offices. The District Court handles all misdemeanor cases, all civil cases where the amount in dispute is under \$5,000, trespass and ejectment cases between landlords and tenants, and all small claims, which includes certain civil cases where the amount in dispute is under \$2,500. The District Court also has concurrent jurisdiction with the Superior Court over all matters in which the amount in dispute is greater than \$5,000 but less than \$10,000. The District Court handles most felony bail hearings in capital and other serious cases. The District Court also holds hearings on commitments under the mental health and drug abuse laws and handles certain agency appeals. The Court has four locations, in Providence, Kent, Newport and Washington Counties, with a clerk's office at each location. The clerks' offices maintain all the records for the Court. As with the other courts, all papers are filed in the clerk's office. The office creates a file for every case and maintains an up-to-date record on what has happened in the case. In addition, the Pretrial Services Unit was established in FY 2002 to provide pre-arraignment and post-arraignment services to defendants.

Statutory History

The District Court is a statutorily authorized court. The powers and jurisdiction of the Court are defined in Title 8 Chapter 8 of the Rhode Island General Laws.

The Budget

Judicial Department - Constitution District Court

	2014 Audited	2015 Audited	2016 Enacted	2016 Revised	2017 Recommend
Expenditures By Subprogram					
Operations	12,163,405	12,452,031	13,002,213	12,189,593	12,337,603
Total Expenditures	\$12,163,405	\$12,452,031	\$13,002,213	\$12,189,593	\$12,337,603
Expenditures By Object					
Personnel	10,287,863	10,746,505	11,359,543	10,248,303	10,524,897
Operating Supplies and Expenses	475,403	329,232	382,463	419,384	333,627
Assistance and Grants	1,285,798	1,355,584	1,240,207	1,420,478	1,428,281
Subtotal: Operating Expenditures	12,049,064	12,431,321	12,982,213	12,088,165	12,286,805
Capital Purchases and Equipment	114,341	20,710	20,000	101,428	50,798
Total Expenditures	\$12,163,405	\$12,452,031	\$13,002,213	\$12,189,593	\$12,337,603
Expenditures By Funds					
General Revenue	11,985,946	12,039,780	12,589,546	11,861,304	12,034,130
Federal Funds	-	112,822	243,416	172,655	165,428
Restricted Receipts	177,459	299,429	169,251	155,634	138,045
Total Expenditures	\$12,163,405	\$12,452,031	\$13,002,213	\$12,189,593	\$12,337,603

Personnel

Judicial Department - Constitution District Court

	Grade	FY 2016		FY 2017	
		FTE	Cost	FTE	Cost
Unclassified					
CHIEF JUDGE DISTRICT COURT	08807F	1.0	190,580	1.0	195,423
ADMINISTRATIVE JUDGE	08805F	1.0	185,067	1.0	189,770
MAGISTRATE	08803F	1.0	177,212	1.0	178,152
ADMINISTRATIVE CLERK	08846A	1.0	164,414	1.0	165,279
ASSOCIATE JUDGE, DISTRICT COURT	08810F	12.0	1,947,979	12.0	1,991,384
DEPUTY EXECUTIVE	08841A	1.0	134,458	1.0	135,171
CHIEF CLERK OF DISTRICT COURTS	08840A	1.0	118,036	1.0	120,086
ASSISTANT ADMINISTRATOR/POLICY & PROGRAMS	04437A	1.0	106,832	1.0	108,688
CLERK (JUDICIAL)	04434A	1.0	98,903	1.0	100,606
ADMINISTRATIVE CLERK (DISTRICT COURT)	04433A	2.0	187,182	2.0	189,292
ASSISTANT ADMINISTRATOR/POLICY & PROGRAMS	08837A	1.0	93,081	1.0	94,698
DEPUTY DIRECTOR (JUDICIAL)	04432A	1.0	83,510	1.0	84,960
ADMINISTRATIVE CLERK	04429A	1.0	79,744	1.0	81,118
ASSISTANT ADMINISTRATOR/MANAGEMENT AND SUPERVISING CLERK	08834A	1.0	74,111	1.0	74,504
ADMINISTRATIVE CLERK OF OFFICE SERVICES	04427A	1.0	68,383	1.0	69,571
COORDINATOR SPECIAL PROJECTS (JUCICIAL)	08827A	1.0	67,543	1.0	68,716
DEPUTY CLERK I	04424A	3.0	197,795	3.0	198,844
ADMINISTRATIVE CLERK	08829A	1.0	65,625	1.0	69,366
DEPUTY CHIEF INVESTIGATOR	04426A	1.0	65,619	1.0	66,759
DEPUTY CHIEF INVESTIGATOR	04426A	2.0	129,746	2.0	132,001
ADMINISTRATIVE ASSISTANT TO CHIEF	08826A	1.0	61,228	1.0	62,141
ASSOCIATE EXECUTIVE ASSISTANT	08826A	3.0	182,118	3.0	187,557
SUPERVISING DEPUTY CLERK-TRAINING OFFICER	04423A	17.0	998,212	17.0	1,020,191
OFFICE MANAGER	04424A	2.0	117,241	2.0	121,204
ASSISTANT CLERK/RESEARCH	04418A	1.0	52,015	1.0	52,291
DEPUTY CLERK	04420A	1.0	46,703	1.0	49,067
GENERAL OPERATIONS ASSISTANT	04414A	1.0	44,939	1.0	45,720
SENIOR OPERATIONS CLERK	04416A	6.0	254,200	6.0	259,070
DATA ENTRY OPERATOR	04412A	9.0	330,388	9.0	335,326
RECORDS AIDE (JUDICIARY)	04410A	1.0	34,448	1.0	34,911
RECORDS CLERK/DATA ENTRY AIDE	04410A	16.0	544,697	16.0	557,165
ADMINISTRATIVE ASSISTANT	00422H	-	18,669	-	18,768
SEASONAL LABORER (JUDICIAL)	00420H	-	27,699	-	27,846
Subtotal		95.0	\$7,090,054	95.0	\$7,228,920

Personnel

Judicial Department - Constitution District Court

	Grade	FY 2016		FY 2017	
		FTE	Cost	FTE	Cost
Overtime		-	86,900	-	16,900
Turnover		-	(712,504)	-	(653,578)
Subtotal		-	(\$625,604)	-	(\$636,678)
Total Salaries		95.0	\$6,464,450	95.0	\$6,592,242
Benefits					
Payroll Accrual			36,853		37,965
FICA			350,466		368,724
Retiree Health			247,180		255,163
Health Benefits			1,080,823		1,139,847
Retirement			1,714,936		1,759,077
Subtotal			\$3,430,258		\$3,560,776
Total Salaries and Benefits		95.0	\$9,894,708	95.0	\$10,153,018
Cost Per FTE Position (Excluding Temporary and Seasonal)			\$104,155		\$106,874
Statewide Benefit Assessment			\$293,362		\$311,646
Payroll Costs		95.0	\$10,188,070	95.0	\$10,464,664
Purchased Services					
Clerical and Temporary Services			233		233
Other Contracts			60,000		60,000
Subtotal			\$60,233		\$60,233
Total Personnel		95.0	\$10,248,303	95.0	\$10,524,897
Distribution By Source Of Funds					
General Revenue		95.0	\$10,158,303	94.0	\$10,452,486
Restricted Receipts		-	\$90,000	1.0	\$72,411
Total All Funds		95.0	\$10,248,303	95.0	\$10,524,897

The Program

Judicial Department - Constitution Traffic Tribunal

Program Mission

Adjudicate the cases within the jurisdiction of the Traffic Tribunal in a timely and fair manner.

Maintain a complete and accurate record for every case.

Program Description

The Traffic Tribunal was created effective July 1, 1999. It is the successor to the Administrative Adjudication Court. It consists of associate judges and magistrates. It is under the supervision of the Chief Magistrate, who is the administrative head of the Traffic Tribunal with the power to make rules for regulating practice, procedure and business within the Traffic Tribunal.

The Traffic Tribunal hears and determines civil traffic violations. It has exclusive jurisdiction over certain offenses and concurrent jurisdiction with the Municipal Courts over others. The Traffic Tribunal hears certain administrative appeals for the Registry of Motor Vehicles. The Appeals Panel of the Traffic Tribunal hears appeals from the Traffic Tribunal and the Municipal Courts. The Traffic Tribunal does not hear those offenses committed in places within the exclusive jurisdiction of the United States, or criminal motor vehicle offenses such as driving so as to endanger resulting in death, and driving while under the influence of alcohol and drugs, which state law specifies will be heard under the jurisdiction of other courts. In 2013 the Traffic Tribunal received exclusive jurisdiction over civil offenses related to possession of marijuana violations of one ounce (1 oz.) or less. The Traffic Tribunal currently sits at its main courthouse in the John O. Pastore Center, 670 New London Avenue in Cranston; Traffic Tribunal also sits in Wakefield.

Statutory History

The powers and jurisdiction of the Traffic Tribunal are defined in Title 8 Chapter 8.2 of the Rhode Island General Laws. The 1999 session of the General Assembly passed Senate Bill S932 entitled the Rhode Island Traffic Safety and Accountability Act of 1999. This act abolished the Administrative Adjudication Court effective July 1, 1999 and created the Traffic Tribunal.

The Budget

Judicial Department - Constitution Traffic Tribunal

	2014 Audited	2015 Audited	2016 Enacted	2016 Revised	2017 Recommend
Expenditures By Subprogram					
Operations	8,326,527	8,430,828	8,542,221	8,399,966	9,018,180
Total Expenditures	\$8,326,527	\$8,430,828	\$8,542,221	\$8,399,966	\$9,018,180
Expenditures By Object					
Personnel	7,116,059	7,481,843	7,553,168	7,466,764	8,100,109
Operating Supplies and Expenses	447,889	483,663	529,722	492,884	492,884
Assistance and Grants	426,665	411,678	426,665	340,888	343,888
Subtotal: Operating Expenditures	7,990,613	8,377,184	8,509,555	8,300,536	8,936,881
Capital Purchases and Equipment	335,914	53,644	32,666	99,430	81,299
Total Expenditures	\$8,326,527	\$8,430,828	\$8,542,221	\$8,399,966	\$9,018,180
Expenditures By Funds					
General Revenue	8,326,527	8,430,828	8,542,221	8,399,966	9,018,180
Total Expenditures	\$8,326,527	\$8,430,828	\$8,542,221	\$8,399,966	\$9,018,180

Personnel

Judicial Department - Constitution Traffic Tribunal

	Grade	FY 2016		FY 2017	
		FTE	Cost	FTE	Cost
Classified					
ENGINEERING ASSISTANT (DOT)	40420H	-	4,200	-	4,200
Subtotal		-	\$4,200	-	\$4,200
Unclassified					
JUDGE ADMINISTRATIVE ADJUDICATION COURT	08803F	2.0	356,508	2.0	358,388
CHIEF MAGISTRATE	08810F	1.0	178,123	1.0	182,649
MAGISTRATE TRAFFIC TRIBUNAL	08803F	4.0	653,468	4.0	667,106
MAGISTRATE TRAFFIC TRIB (JUDIC	08803F	1.0	155,060	1.0	159,001
EXECUTIVE DIRECTOR (JUDICIAL)	08844A	1.0	130,895	1.0	136,822
ASSISTANT DIRECTOR POLICY OFFICE	08839A	1.0	123,596	1.0	125,727
ASSISTANT LEGAL COUNSEL (TRANSPORTATION)	08822A	0.6	63,268	0.6	63,604
SENIOR POLICY ASSOCIATE	08838A	1.0	102,146	1.0	103,257
ADMINISTRATIVE CLERK	04429A	0.6	59,265	0.6	59,579
POLICY ASSOCIATE (JUDICIAL)	08834A	1.0	91,077	1.0	96,321
PRINCIPAL SUPERVISORY CLERK	08830A	1.0	84,913	1.0	86,387
ADMINISTRATOR/ADMINISTRATIVE	04438A	1.0	82,976	1.0	83,417
ADMINISTRATIVE CLERK I	04429A	1.0	81,690	1.0	82,119
COORDINATOR SPECIAL PROJECTS (JUCICIAL)	08827A	1.0	75,584	1.0	76,897
ADMINISTRATIVE CLERK OF OFFICE SERVICES	04427A	3.0	221,043	3.0	223,933
SPECIAL ASSISTANT	08829A	1.0	72,909	1.0	75,967
PRINCIPAL ASSISTANT ADMINISTRATOR	04425A	2.0	127,077	2.0	128,745
ASSISTANT SUPERVISING CLERK	04422A	0.6	35,773	0.6	36,315
DEPUTY CLERK	04420A	4.0	215,277	4.0	218,309
DEPUTY CLERK (JUDICIAL)	04420A	3.0	142,956	3.0	148,614
DEPUTY CLERK I	04424A	1.0	46,813	1.0	47,062
SECURITY OFFICER	04419A	9.0	403,727	9.0	411,062
SENIOR OPERATIONS CLERK (JUDICIAL)	04416A	5.0	223,727	5.0	228,196
SENIOR OPERATIONS CLERK	04416A	2.0	83,362	2.0	84,368
GENERAL OPERATIONS ASSISTANT	04414A	6.0	245,492	6.0	250,581
DEPUTY CLERK I	04420A	0.5	20,420	0.5	20,528
ASSISTANT ADMINISTRATIVE SECRETARY	04412A	1.0	40,017	1.0	40,712
ADMINISTRATIVE ASSISTANT (JUDICIAL)	04413A	5.0	197,527	5.0	200,699
ADMINISTRATIVE ASSISTANT	04413A	6.0	236,322	6.0	239,763
DATA ENTRY OPERATOR	04412A	5.0	181,535	5.0	185,923
RECORDS CLERK/DATA ENTRY AIDE	04410A	7.0	240,389	7.0	244,767
COURT INTERPRETER-SEASONAL	00273H	-	15,828	-	15,912
SEASONAL LABORER (JUDICIAL)	00420H	-	44,223	-	44,423
Subtotal		78.3	\$5,032,986	78.3	\$5,127,153

Personnel

Judicial Department - Constitution Traffic Tribunal

	Grade	FY 2016		FY 2017	
		FTE	Cost	FTE	Cost
Overtime		-	15,000	-	15,000
Turnover		-	(596,049)	-	(362,317)
Subtotal		-	(\$581,049)	-	(\$347,317)
Total Salaries		78.3	\$4,456,137	78.3	\$4,784,036
Benefits					
Payroll Accrual			25,776		27,902
FICA			317,239		341,996
Retiree Health			266,556		263,876
Health Benefits			760,422		886,390
Retirement			1,196,340		1,330,157
Subtotal			\$2,566,333		\$2,850,321
Total Salaries and Benefits		78.3	\$7,022,470	78.3	\$7,634,357
Cost Per FTE Position (Excluding Temporary and Seasonal)			\$89,687		\$97,501
Statewide Benefit Assessment			\$204,294		\$225,752
Payroll Costs		78.3	\$7,226,764	78.3	\$7,860,109
Purchased Services					
Other Contracts			240,000		240,000
Subtotal			\$240,000		\$240,000
Total Personnel		78.3	\$7,466,764	78.3	\$8,100,109
Distribution By Source Of Funds					
General Revenue		78.3	\$7,466,764	78.3	\$8,100,109
Total All Funds		78.3	\$7,466,764	78.3	\$8,100,109

The Program

Judicial Department - Constitution Worker's Compensation Court

Program Mission

Hear all disputes regarding workers' compensation claims.

Decide all controversies efficiently, effectively, and economically.

Program Description

The Workers' Compensation Court is a member of the unified judicial system and has the same authority and power to subpoena and to cite and punish for civil contempt as exists in the Superior Court. It hears and decides all controversies as they pertain to Workers' Compensation in an efficient, effective, and economical manner. Presently, it has nine judges and one chief judge as well as support staff which includes administrators, hearing reporters, and clerical staff. It is supported from the Workers' Compensation Administrative Fund.

Upon the filing of a petition for benefits arising out of a work-related injury case, a case file is set up and notices are sent to all parties. Before proceeding to a full evidentiary hearing, a judge conducts a pretrial conference, with a view of expediting the case and reducing the issues in dispute to a minimum. If the matter can not be resolved informally the judge must enter a pretrial order as to the right of the employee to receive benefits (approximately 70 percent of all litigation is concluded at this point).

Those cases not resolved at pretrial are heard by the same judge for trial. At the trial, a judge will hear all questions. The judge will then decide the merits of the controversy pursuant to the law and a fair preponderance of the evidence. From this decision a decree is entered. At this stage either party may appeal to the Appellate Division. The Appellate Division consists of three judges assigned by the Chief Judge, none of whom is the Trial Judge.

The Appellate Division judges review the transcript and the record of the case along with the appellant's reasons for appeal and memoranda of law. The Appellate Division then decides the matter and a final decree of the Appellate Division is entered. If either party is aggrieved by the decision of the Appellate Division, they may petition the Supreme Court for a writ of certiorari. Upon petition, the Supreme Court may review any decree of the Workers' Compensation Court.

Statutory History

Title 28, Chapters 29 through 38 of the Rhode Island General Laws includes provisions relating to the Workers' Compensation Court.

The Budget

Judicial Department - Constitution Worker's Compensation Court

	2014 Audited	2015 Audited	2016 Enacted	2016 Revised	2017 Recommend
Expenditures By Subprogram					
Operations	7,228,824	7,359,629	7,763,807	7,853,054	8,096,017
Total Expenditures	\$7,228,824	\$7,359,629	\$7,763,807	\$7,853,054	\$8,096,017
Expenditures By Object					
Personnel	5,940,921	6,062,506	6,479,535	6,529,369	6,763,332
Operating Supplies and Expenses	533,239	517,781	602,185	629,898	635,398
Assistance and Grants	735,367	684,981	682,087	688,587	692,087
Subtotal: Operating Expenditures	7,209,527	7,265,268	7,763,807	7,847,854	8,090,817
Capital Purchases and Equipment	19,297	94,361	-	5,200	5,200
Total Expenditures	\$7,228,824	\$7,359,629	\$7,763,807	\$7,853,054	\$8,096,017
Expenditures By Funds					
Restricted Receipts	7,228,824	7,359,629	7,763,807	7,853,054	8,096,017
Total Expenditures	\$7,228,824	\$7,359,629	\$7,763,807	\$7,853,054	\$8,096,017

Personnel

Judicial Department - Constitution Worker's Compensation Court

	Grade	FY 2016		FY 2017	
		FTE	Cost	FTE	Cost
Unclassified					
CHIEF JUDGE, WORKERS COMPENSATION COURT	08807F	1.0	203,574	1.0	208,748
JUDGE, WORKERS COMPENSATION COURT	08810F	9.0	1,511,306	9.0	1,539,275
ADMINISTRATIVE CLERK (WORKERS COMP COURT)	00846A	1.0	166,317	1.0	167,182
ADMINISTRATOR, WORKERS' COMPENSATION	08841A	1.0	131,656	1.0	133,943
ASSISTANT ADMINISTRATOR/POLICY & PROGRAMS	08837A	1.0	113,130	1.0	115,075
DEPUTY ADMINISTRATOR WORKERS'	08837A	1.0	111,697	1.0	112,290
MEDICAL ADVISORY BOARD ADMINISTRATOR	04440A	1.0	110,403	1.0	112,321
EXECUTIVE ASSISTANT (JUDICIAL)	00336A	1.0	103,220	1.0	105,012
PROJECT MANAGER (JUDICIAL)	08830A	1.0	87,191	1.0	87,651
SENIOR ASSISTANT ADMINISTRATOR	00326A	1.0	71,850	1.0	73,098
COURT REPORTER	00327A	7.0	475,285	7.0	481,288
EXECUTIVE SECRETARY TO CHIEF JUDGE	08825A	1.0	65,346	1.0	66,465
COURT REPORTER	08827A	1.0	64,731	1.0	65,849
ADMINISTRATIVE ASSISTANT/CONFIDENTIAL	04424A	3.0	184,688	3.0	187,882
LAW CLERK (JUDICIARY)	08823A	2.0	109,500	2.0	111,400
DEPUTY CLERK	00320A	10.0	541,625	10.0	551,530
MEDICAL ADVISORY BOARD COORDINATOR	04418A	1.0	45,513	1.0	46,303
SENIOR MANAGEMENT ANALYST	00323A	1.0	45,401	1.0	45,642
DATA ENTRY OPERATOR	00320A	2.0	86,468	2.0	88,123
DATA ENTRY OPERATOR	00312A	4.0	138,946	4.0	139,984
MEDICAL ADVISORY BOARD MEMBER	10515D	-	1,600	-	1,600
MEDICAL ADVISORY BOARD MEMBER	00515D	-	14,400	-	14,400
Subtotal		50.0	\$4,383,847	50.0	\$4,455,061
Turnover		-	(215,545)	-	(112,342)
Subtotal		-	(\$215,545)	-	(\$112,342)
Total Salaries		50.0	\$4,168,302	50.0	\$4,342,719
Benefits					
Payroll Accrual			23,359		24,170
FICA			284,650		296,386
Retiree Health			152,302		153,990
Health Benefits			583,907		614,325
Retirement			1,059,366		1,060,193
Subtotal			\$2,103,584		\$2,149,064
Total Salaries and Benefits		50.0	\$6,271,886	50.0	\$6,491,783
Cost Per FTE Position (Excluding Temporary and Seasonal)			\$125,438		\$129,836
Statewide Benefit Assessment			\$191,008		\$205,074
Payroll Costs		50.0	\$6,462,894	50.0	\$6,696,857

Personnel

Judicial Department - Constitution Worker's Compensation Court

	Grade	FY 2016		FY 2017	
		FTE	Cost	FTE	Cost
Purchased Services					
Information Technology			32,000		32,000
Legal Services			12,800		12,800
Other Contracts			21,500		21,500
Design and Engineering Services			175		175
Subtotal			\$66,475		\$66,475
Total Personnel		50.0	\$6,529,369	50.0	\$6,763,332
Distribution By Source Of Funds					
Restricted Receipts		50.0	\$6,529,369	50.0	\$6,763,332
Total All Funds		50.0	\$6,529,369	50.0	\$6,763,332

The Program

Judicial Department - Constitution Judicial Tenure & Discipline

Program Mission

Ensure the integrity of the Rhode Island Court System.
Investigate reasonable allegations of wrongdoing by Rhode Island judges. Recommend, when appropriate, sanctions to be imposed against Rhode Island judges.

Program Description

The Commission on Judicial Tenure and Discipline, a program of the Rhode Island Judiciary, is responsible for conducting investigations of judges suspected of or charged with misconduct. The commission, upon receiving from any person a verified statement, not unfounded or frivolous, alleging facts indicating that a Justice of the Supreme Court, the Superior Court, the Family Court, the District Court, the Workers' Compensation Court, the Traffic Tribunal and the Probate Court judges or magistrates and judicial officers appointed pursuant to Rhode Island General Laws is guilty of a serious violation of the Code of Judicial Conduct or the Canons of Judicial Ethics, or of a willful and persistent failure to perform his/her duties, or disabling substance abuse, or conduct that brings the judicial office into serious disrepute, or that such a judge has a physical or mental disability that seriously interferes and will continue to interfere with the performance of his/her duties, shall make a preliminary investigation to determine whether formal proceedings shall be instituted and a hearing held. The Commission may, on its own initiative, make such a preliminary investigation, without receiving a verified statement, to determine whether formal proceedings shall be instituted and a hearing held.

When formal proceedings are ordered, the justice is given formal notice of the charges and of the time fixed for a public hearing. The justice is required to appear at the hearing, may be represented by counsel, offer evidence and otherwise participate in said hearing. Recommendation concerning the disciplining of any justice shall be made in a report to the Chief Justice of the Supreme Court. The Supreme Court is required to grant a review if requested by said justice. After the hearing, the Supreme Court may affirm, modify or reject the Commission's recommendation(s).

Statutory History

The Commission on Judicial Tenure and Discipline was established in 1974 under Rhode Island Public Law 1972, Ch. 136, Section 1 for the purpose of conducting investigations upon the filing of a verified complaint or upon its own initiative of the conduct of judges of the Supreme, Superior, Family and District Courts. Subsequent enactments in P.L. 1983, Ch. 26 and P.L. 1990, Ch. 332, Article 1, sec. 13 and P.L. 1991, Ch. 132, sec. 2 as well as P.L. 1991, Ch. 205, sec. 2 and P.L. 1996, Ch. 312 enlarged the jurisdiction to include the Workers' Compensation Court, the Traffic Tribunal as well as all judges of Probate Courts in any city or town in the State of Rhode Island. P.L. 2007, Ch. 178 altered the composition of the Commission.

The Budget

Judicial Department - Constitution Judicial Tenure & Discipline

	2014 Audited	2015 Audited	2016 Enacted	2016 Revised	2017 Recommend
Expenditures By Subprogram					
Operations	107,834	119,161	121,527	121,462	124,865
Total Expenditures	\$107,834	\$119,161	\$121,527	\$121,462	\$124,865
Expenditures By Object					
Personnel	105,620	116,249	118,577	118,512	121,915
Operating Supplies and Expenses	2,214	2,912	2,950	2,950	2,950
Subtotal: Operating Expenditures	107,834	119,161	121,527	121,462	124,865
Total Expenditures	\$107,834	\$119,161	\$121,527	\$121,462	\$124,865
Expenditures By Funds					
General Revenue	107,834	119,161	121,527	121,462	124,865
Total Expenditures	\$107,834	\$119,161	\$121,527	\$121,462	\$124,865

Personnel

Judicial Department - Constitution Judicial Tenure & Discipline

	Grade	FY 2016		FY 2017	
		FTE	Cost	FTE	Cost
Unclassified					
EXECUTIVE ASSISTANT TO THE CHAIRPERSON	08829A	1.0	73,027	1.0	74,296
Subtotal		1.0	\$73,027	1.0	\$74,296
Total Salaries		1.0	\$73,027	1.0	\$74,296
Benefits					
Payroll Accrual			418		431
FICA			5,587		5,683
Retiree Health			4,360		4,435
Health Benefits			6,084		6,285
Retirement			18,177		19,756
Subtotal			\$34,626		\$36,590
Total Salaries and Benefits		1.0	\$107,653	1.0	\$110,886
Cost Per FTE Position (Excluding Temporary and Seasonal)			-		-
Statewide Benefit Assessment			\$3,359		\$3,529
Payroll Costs		1.0	\$111,012	1.0	\$114,415
Purchased Services					
Legal Services			7,500		7,500
Subtotal			\$7,500		\$7,500
Total Personnel		1.0	\$118,512	1.0	\$121,915
Distribution By Source Of Funds					
General Revenue		1.0	\$118,512	1.0	\$121,915
Total All Funds		1.0	\$118,512	1.0	\$121,915