

State of Rhode Island and Providence Plantations

Budget



Fiscal Year 2017

Volume III – Education

Gina M. Raimondo, Governor

Agency

Rhode Island Council On The Arts

Agency Mission

To ensure that the role of the arts in the life of Rhode Island communities will continue to grow and play an increasing role in the welfare and educational experience of Rhode Islanders.

Agency Description

The Rhode Island State Council on the Arts (RISCA) was established in 1967. It provides grants, technical assistance and support to artists, arts organizations, schools, community centers, social service organizations, and local governments to bring the arts into the lives of Rhode Islanders. RISCA employs a variety of methods to carry out its work, including grant-making, strategic partnerships, outreach and facilitation.

Funding within the agency's various grant categories allows the Council to address its primary function by awarding grants to artists and non-profit organizations to support arts programming in local communities, schools and other settings. RISCA-supported cultural programs have a significant impact on the local and state economy, providing jobs for artists and the many businesses that depend on a vibrant arts community. RISCA grants also play an important role in providing a complete education for all Rhode Island children and youth, helping students develop creativity and problem-solving skills that will contribute to their success in life.

RISCA is involved in a series of strategic partnerships with major institutions and entities from the public and private sectors to broaden support for the arts in Rhode Island. A few current partners include: the National Endowment for the Arts, the New England Foundation for the Arts, the Rhode Island Foundation, the Rhode Island Alliance for Arts Education, the Rhode Island Teaching Artists Center (RITAC), VSA arts of Rhode Island, the Rhode Island Department of Elementary and Secondary Education, the Massachusetts Museum of Contemporary Art (MassMoCA), among others.

RISCA provides technical assistance and information services to a large number of individuals and entities. These services include management assistance to individual artists and arts organizations, workshops, and general dissemination of information through a wide variety of media including the RISCA website and blog, the monthly newsletter, and RISCA's social media accounts.

RISCA manages Rhode Island's Art for Public Facilities Program, which allows the Council to commission or acquire works of art for state buildings through the Allocation for Art for Public Facilities Act, which sets aside a portion of funds for the construction or renovation of state facilities for the acquisition of art. The Council coordinates the process for commissioning art in public facilities in compliance with the Act, providing opportunities for the general public to experience art as part of their interaction with state government.

In the FY 2017 Budget, the RI Film and Television Office, housed within the RI State Council on the Arts, is eliminated. The office's primary responsibility is to promote the State of Rhode Island to production companies and to review and approve applications for Film Production Tax Credits, which are scheduled to sunset in FY 2019. Accordingly, the Governor recommends that the RI Film and Television Office be eliminated and that responsibility for marketing the state to production companies and overseeing the Tax Credit program become the responsibility of the Commerce Corporation.

Statutory History

R.I.G.L. 42-75 defines the role of the Council.

R.I.G.L. 42-75.2 describes the Allocation for Art for Public Facilities Act.

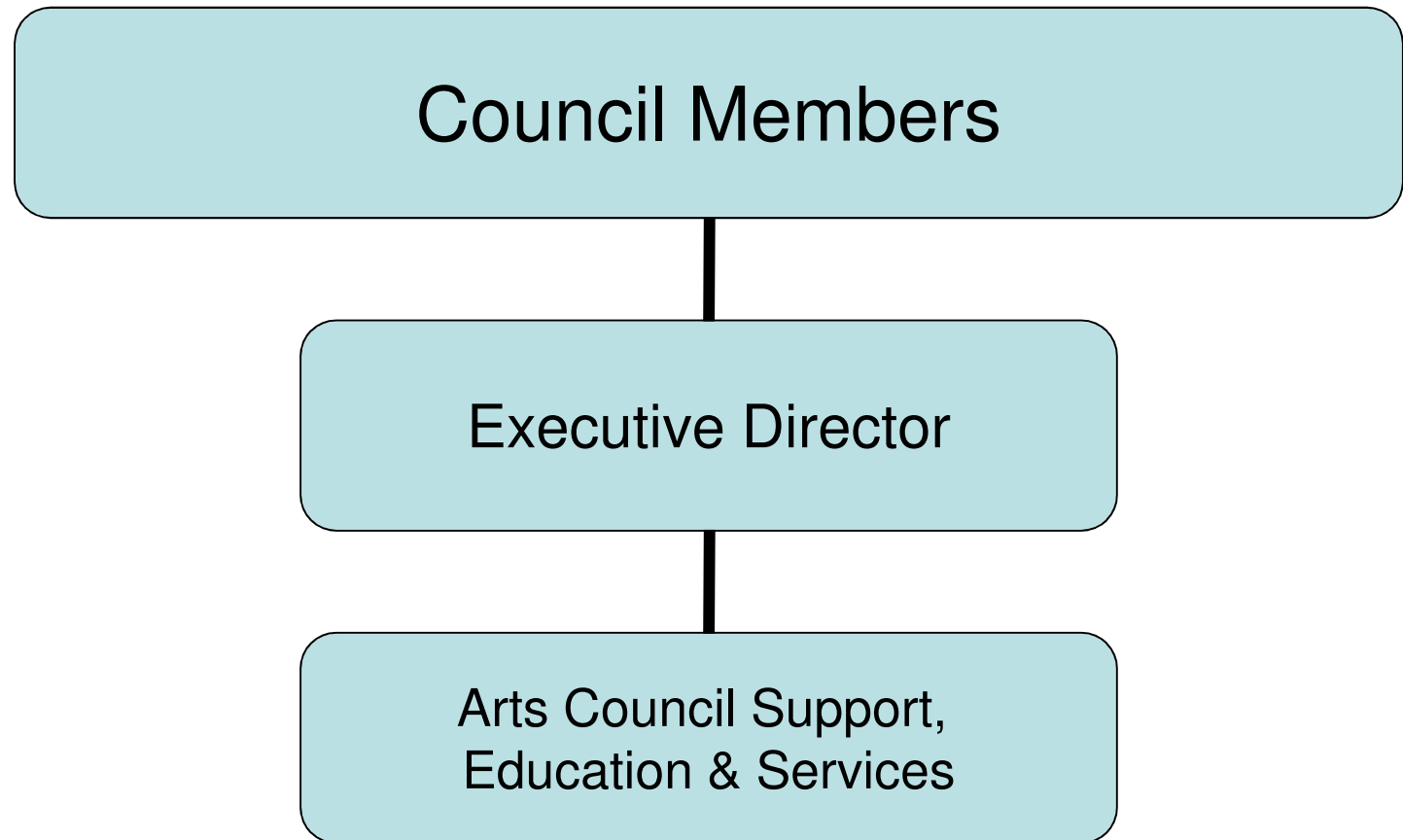
Budget

Rhode Island Council On The Arts

	FY 2014 Audited	FY 2015 Audited	FY 2016 Enacted	FY 2016 Revised	FY 2017 Recommend
Expenditures By Program					
Central Management	1,376,375	1,332,667	2,952,124	2,454,800	1,533,700
Grants Programs	904,574	1,054,574	1,084,574	1,084,574	1,084,574
Total Expenditures	\$2,280,949	\$2,387,241	\$4,036,698	\$3,539,374	\$2,618,274
Expenditures By Object					
Personnel	595,428	635,254	965,879	1,055,273	676,581
Operating Supplies and Expenses	61,366	55,507	140,952	140,727	101,719
Assistance and Grants	1,368,897	1,534,605	1,576,574	1,576,574	1,576,574
Subtotal: Operating Expenditures	2,025,691	2,225,366	2,683,405	2,772,574	2,354,874
Capital Purchases and Equipment	255,258	161,875	1,353,293	766,800	263,400
Total Expenditures	\$2,280,949	\$2,387,241	\$4,036,698	\$3,539,374	\$2,618,274
Expenditures By Funds					
General Revenue	1,310,474	1,490,966	1,863,052	1,859,778	1,539,620
Federal Funds	686,230	713,200	775,353	774,296	775,454
Operating Transfers from Other Funds	284,245	183,075	1,398,293	905,300	303,200
Total Expenditures	\$2,280,949	\$2,387,241	\$4,036,698	\$3,539,374	\$2,618,274
FTE Authorization	6.0	6.0	8.6	8.6	6.0

The Agency

Rhode Island Council on the Arts



Personnel

Rhode Island Council On The Arts Central Management

	Grade	FY 2016		FY 2017	
		FTE	Cost	FTE	Cost
Unclassified					
EXECUTIVE DIRECTOR OFFICE OF FILM &	00839A	1.0	107,693	-	-
EXECUTIVE DIRECTOR (ARTS COUNCIL)	00833A	1.0	93,119	1.0	93,614
SENIOR SYSTEMS DESIGN PROGRAMMER	00328A	0.6	41,529	-	-
ARTS IN EDUCATION DIRECTOR	00383F	1.0	62,904	1.0	63,231
SENIOR ADMINISTRATIVE AIDE	00321A	1.0	58,146	1.0	58,442
SENIOR RESEARCH TECHNICIAN	00321A	3.0	153,543	3.0	153,658
ADMINISTRATIVE ASSISTANT	00316A	1.0	44,993	-	-
Subtotal		8.6	\$561,927	6.0	\$368,945
Total Salaries		8.6	\$561,927	6.0	\$368,945
Benefits					
Payroll Accrual			3,212		2,135
FICA			42,987		28,221
Retiree Health			33,546		22,027
Health Benefits			110,103		95,266
Retirement			138,649		97,162
Subtotal			\$328,497		\$244,811
Total Salaries and Benefits		8.6	\$890,424	6.0	\$613,756
Cost Per FTE Position (Excluding Temporary and Seasonal)			\$103,538		\$102,293
Statewide Benefit Assessment			\$25,849		\$17,525
Payroll Costs		8.6	\$916,273	6.0	\$631,281
Purchased Services					
Information Technology			500		500
Management & Consultant Services			73,000		29,800
Other Contracts			45,000		-
Training and Educational Services			15,000		15,000
Design and Engineering Services			5,500		-
Subtotal			\$139,000		\$45,300
Total Personnel		8.6	\$1,055,273	6.0	\$676,581
Distribution By Source Of Funds					
General Revenue		6.6	\$722,132	4.0	\$435,982
Federal Funds		2.0	\$209,641	2.0	\$210,799
Operating Transfers from Other Funds		-	\$123,500	-	\$29,800
Total All Funds		8.6	\$1,055,273	6.0	\$676,581

Performance Measures

Rhode Island Council On The Arts

Communities Served

The Rhode Island State Council on the Arts (RISCA) sets a high standard for serving every Rhode Island community. The figures below represent the percentage of Rhode Island's 39 cities and towns that have been served by RISCA through grants or direct services.

	2013	2014	2015	2016	2017
Target	92%	95%	95%	95%	95%
Actual	100%	100%	98%	--	--

Performance for this measure is reported by state fiscal year.

Artists Supported

The figures below represent the number of artists who have been employed or engaged in programs supported by RISCA. This employment is either part-time or full-time and is an indicator of the role the arts play in the state's economy.

	2013	2014	2015	2016	2017
Target	26,500	28,000	28,000	29,000	35,000
Actual	28,286	34,548	38,500	--	--

Performance for this measure is reported by state fiscal year.

Program Participation

The figures below represent the number of individuals who have attended or taken part in arts programs supported by RISCA.

	2013	2014	2015	2016	2017
Target	2,300,000	2,500,000	2,600,000	2,700,000	3,800,000
Actual	2,760,029	3,958,373	4,200,500	--	--

Performance for this measure is reported by state fiscal year.