

State of Rhode Island and Providence Plantations

Budget



Fiscal Year 2017

Volume I – General Government and Quasi-Public Agencies

Gina M. Raimondo, Governor

Agency

Board Of Elections

Agency Mission

To protect the integrity of the electoral process and to effectively and efficiently administer the provisions of United States and Rhode Island election laws.

Agency Description

The Board of Elections supervises all elections and state and local referenda. The Board supervises the maintenance, preparation and delivery of electronic optical-scan voting equipment, election return forms and other supplies used at each polling place. The Board instructs and certifies all election officials assigned to polls and prepares and distributes poll worker guides and related materials. The Board also appoints, trains and assigns bi-partisan pairs of supervisors for the mail ballot program for institutionally confined persons. The Board certifies the results of all elections under its jurisdiction, including tabulating machine and mail ballot votes cast; conducts recounts; certifies results to the Secretary of State; issues certificates of election to candidates; and provides an official tabulation of returns.

The Board oversees voter registration and public education activities and provides all registration materials used in the State. The Board trains and supervises all individuals who serve as statewide voter registration agents. The agency conducts voter registration drives throughout the State and at each institution of higher education in Rhode Island. It oversees and coordinates the registration of voters at other state agencies and departments as part of the National Voter Registration Act. The Board carries out the mandates of the Rhode Island Campaign Contributions and Expenditures Reporting Act (the "Act"). The agency oversees and monitors the campaign finance activities of candidates, political action committees and state vendors. The Board's responsibilities also include the development, printing and distribution of forms required for candidate, committee and vendor reports as well as the publication of manuals describing and explaining the requirements set forth in the statutes. The Board reviews and makes available for inspection all reports filed, prepares summaries and an annual report, and is authorized to investigate suspected violations of the Act. The agency oversees and administers the public financing of campaigns program for each of the State's five general offices.

Statutory History

Chapter 825 of the Public Laws of 1901 created the "State Returning Board," which was replaced by Chapter 1040 of the Public Laws of 1941 which created the "Board of Elections" as a partisan board. Chapter 312 of the Public Laws of 1979 amended the law to establish the Board of Elections as a non-partisan board. R.I.G.L. 17-7 sets forth its duties and powers. R.I.G.L. 17-25 sets out the mandates of the Rhode Island Campaign Contributions and Expenditure Reporting Act (public financing of campaigns). R.I.G.L. 42-6 provides for the registration of voters at other state agencies. R.I.G.L. 17-27 provides for reporting requirements and monitoring of political contributions by state vendors. R.I.G.L. 17-19 provides for the use of an optical scan precinct count voting system in state elections.

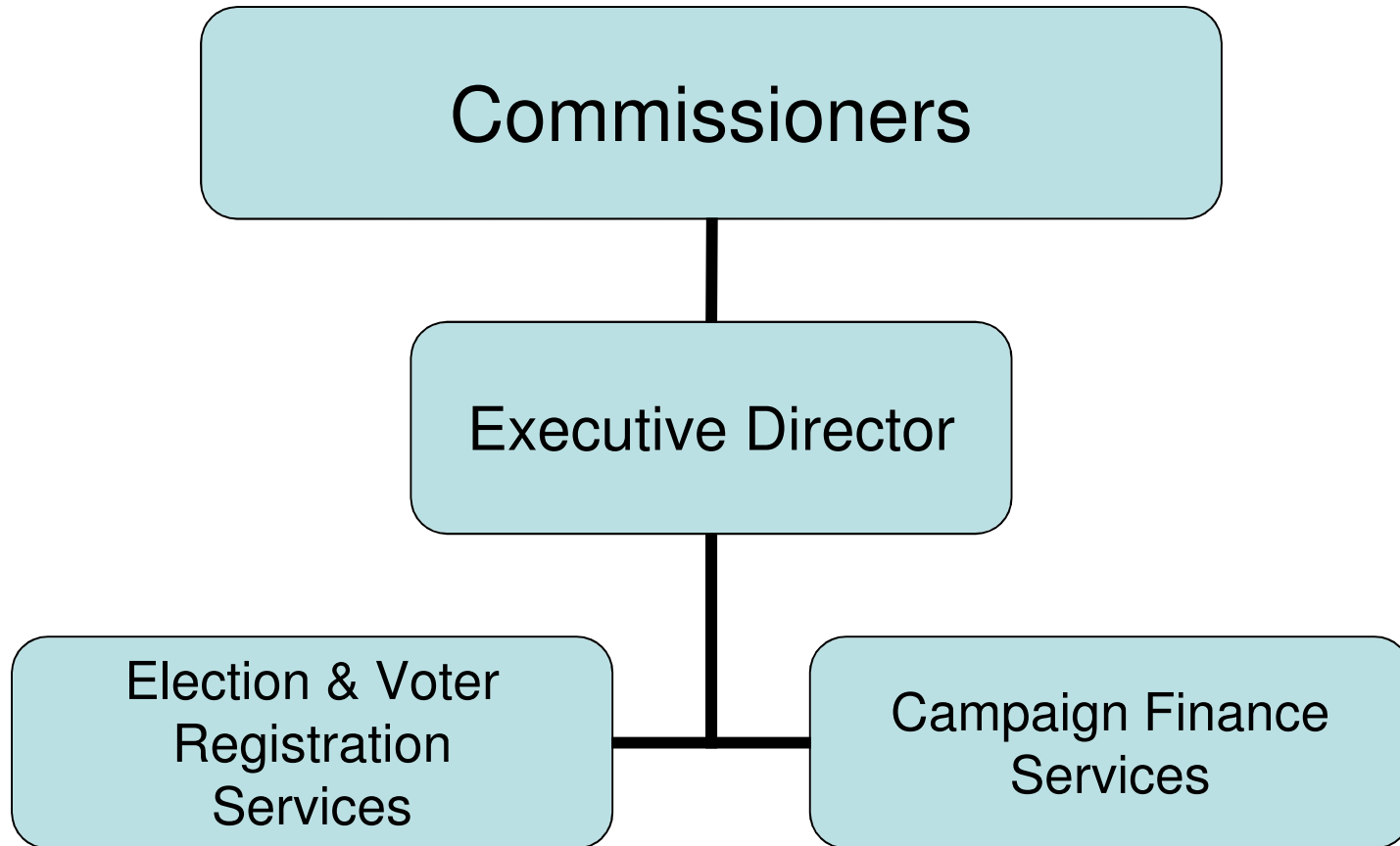
Budget

Board Of Elections

	FY 2014 Audited	FY 2015 Audited	FY 2016 Enacted	FY 2016 Revised	FY 2017 Recommend
Expenditures By Program					
Central Management	1,573,262	4,656,136	1,818,305	1,797,868	1,982,707
Total Expenditures	\$1,573,262	\$4,656,136	\$1,818,305	\$1,797,868	\$1,982,707
Expenditures By Object					
Personnel	1,323,989	1,356,115	1,269,831	1,212,410	1,519,827
Operating Supplies and Expenses	248,159	618,193	526,784	492,458	454,880
Assistance and Grants	-	2,620,273	-	85,000	-
Subtotal: Operating Expenditures	1,572,148	4,594,581	1,796,615	1,789,868	1,974,707
Capital Purchases and Equipment	1,114	61,555	21,690	8,000	8,000
Total Expenditures	\$1,573,262	\$4,656,136	\$1,818,305	\$1,797,868	\$1,982,707
Expenditures By Funds					
General Revenue	1,573,262	4,656,136	1,818,305	1,797,868	1,982,707
Total Expenditures	\$1,573,262	\$4,656,136	\$1,818,305	\$1,797,868	\$1,982,707
FTE Authorization	11.0	11.0	11.0	11.0	12.0

The Agency

Board of Elections



Personnel

Board Of Elections Central Management

	Grade	FY 2016		FY 2017	
		FTE	Cost	FTE	Cost
Unclassified					
EXECUTIVE DIRECTOR	00844A	1.0	145,223	1.0	145,994
PRINCIPAL PROJECTS MANAGER	00831A	1.0	86,485	1.0	86,924
SUPERVISING ACCOUNTANT	00831A	1.0	78,927	1.0	79,346
PLANNING AND PROGRAM DEVELOPMENT	00320A	4.0	201,324	4.0	203,230
SENIOR ADMINISTRATIVE AIDE/TRAINING	00319A	1.0	43,722	1.0	45,070
SENIOR RECEPTIONIST	00312A	1.0	40,466	1.0	40,681
CONFIDENTIAL SECRETARY	00817A	1.0	40,271	1.0	41,405
CLERK/MACHINE DEMONSTRATOR/ASSISTANT	00313A	1.0	36,472	1.0	37,201
ADMINISTRATIVE ASSISTANT	00323A ¹	-	-	1.0	34,969
COMMISSIONER-BOARD OF ELECTIONS	00510F	-	28,000	-	28,000
SEASONAL OPERATIONS CLERK	00273H	-	-	-	-
Subtotal		11.0	\$700,890	12.0	\$742,820
Overtime		-	-	-	16,000
Temporary and Seasonal		-	60,000	-	210,000
Turnover		-	(88,305)	-	(37,023)
Subtotal		-	(\$28,305)	-	\$188,977
Total Salaries		11.0	\$672,585	12.0	\$931,797
Benefits					
Payroll Accrual			3,664		3,900
FICA			42,433		49,336
Retiree Health			42,167		44,409
Health Benefits			181,417		204,997
Retirement			160,489		174,307
Subtotal			\$430,170		\$476,949
Total Salaries and Benefits		11.0	\$1,102,755	12.0	\$1,408,746
Cost Per FTE Position (Excluding Temporary and Seasonal)			\$94,796		\$99,896
Statewide Benefit Assessment			\$29,772		\$31,198
Payroll Costs		11.0	\$1,132,527	12.0	\$1,439,944
Purchased Services					
Information Technology			12,000		12,000
Clerical and Temporary Services			1,000		1,000
Legal Services			66,095		66,095
Other Contracts			788		788
Subtotal			\$79,883		\$79,883
Total Personnel		11.0	\$1,212,410	12.0	\$1,519,827
Distribution By Source Of Funds					
General Revenue		11.0	\$1,212,410	12.0	\$1,519,827
Total All Funds		11.0	\$1,212,410	12.0	\$1,519,827

Personnel

Board Of Elections

Central Management

	Grade	FY 2016		FY 2017	
		FTE	Cost	FTE	Cost
<i>1 FY 2017 budget includes 1.0 new Administrative Assistant due to increased workload associated with passage of new campaign finance laws.</i>					